

# Northern Ireland

## Maritime & Offshore



# Contents

<b>Northern Ireland Maritime &amp; Offshore</b>	<b>4</b>	GE Grid	<b>56</b>
<b>Northern Ireland Financial and support package</b>	<b>6</b>	GES Group	<b>57</b>
<b>Northern Ireland Research &amp; development</b>	<b>7</b>	Graham Construction	<b>58</b>
<b>Northern Ireland's Strengths</b>	<b>8</b>	G Smyth Boats	<b>59</b>
<b>Enabling capabilities &amp; technologies</b>	<b>10</b>	Harland & Wolff	<b>60</b>
<b>Core sector capabilities</b>	<b>11</b>	Horizon Engineering Solutions	<b>61</b>
<b>Northern Ireland Investment in innovation</b>	<b>12</b>	Inov8 Systems	<b>62</b>
<b>Northern Ireland Maritime &amp; Offshore Network</b>	<b>17</b>	Ionic Technologies	<b>63</b>
		iZon Live Ltd	<b>64</b>
		Joulen	<b>65</b>
<b>Northern Ireland Harbour &amp; ports</b>		KA Engineering	<b>66</b>
Belfast Harbour	<b>20</b>	Kelvatek	<b>67</b>
Foyle Port	<b>22</b>	Kinsetsu	<b>68</b>
Larne Port	<b>24</b>	KX	<b>69</b>
Warrenpoint Port	<b>26</b>	Lagan Energy Engineering	<b>70</b>
Foyle Green Energy Park	<b>28</b>	Madden Marine	<b>71</b>
		McLaughlin & Harvey	<b>72</b>
<b>Company profiles</b>		McSherry Civil Marine	<b>73</b>
A&L Goodbody	<b>31</b>	MJM Marine	<b>74</b>
Artemis Technologies	<b>32</b>	Moore Concrete	<b>75</b>
Barton Industrial Services	<b>33</b>	Mott MacDonald Ltd	<b>76</b>
CASC	<b>34</b>	North Channel Wind	<b>77</b>
Catagen	<b>35</b>	Plaswire	<b>78</b>
Causeway Geo	<b>36</b>	Polysorb	<b>79</b>
CCP Grandson Advanced Composites	<b>37</b>	Red Bay Boats	<b>80</b>
Cimpina	<b>38</b>	Ridgeway Rockbags	<b>81</b>
Clarksons Port Services	<b>39</b>	Doyle Shipping Group	<b>82</b>
Continu	<b>40</b>	RPS - a Tetra Tech Company	<b>83</b>
Copius Group	<b>41</b>	Simply Blue	<b>84</b>
Creative Composites	<b>42</b>	Skylark	<b>85</b>
Cunningham Covers	<b>43</b>	SpringCo	<b>86</b>
Decom Engineering	<b>44</b>	Survitec	<b>87</b>
De Romein Nearshore	<b>45</b>	Tatham & Co	<b>88</b>
DHL (UK)	<b>46</b>	The Delux Group	<b>89</b>
Diver Ltd	<b>47</b>	Torch Energy Consulting	<b>90</b>
Doyle Shipping Group	<b>48</b>	Total Batching Solutions	<b>91</b>
DR Maritime Assets Ltd	<b>49</b>	Ventus Energy	<b>92</b>
EHS International	<b>50</b>	Vigitech Energy Ltd	<b>93</b>
Elecsys	<b>51</b>	Wilson Marine Management Ltd	<b>94</b>
Everun	<b>52</b>		
FjordStrong	<b>53</b>		
FM Environmental Ltd	<b>54</b>	<b>Capability matrix</b>	<b>96</b>
Gavin & Doherty	<b>55</b>		



# Northern Ireland Maritime & Offshore

**With a rich maritime history and well-established engineering base, Northern Ireland is leading the way with offshore wind and maritime supply chain innovation, supporting projects globally.**

## Why Northern Ireland?

Northern Ireland's maritime & offshore wind supply chain is evolving, with agile companies ready to meet customers' needs at pace. Our ports, with deep water access and industrially zoned land, are ready for development and are ideal locations as logistics bases for Celtic, Atlantic and Irish Sea offshore energy projects. The ports offer access to an extensive range of specialist engineering companies to support design, manufacture, assembly, fabrication, installation, and operation and maintenance requirements.

Following the UK's exit from the EU, agreements made between both jurisdictions through the Withdrawal Agreement (Northern Ireland Protocol and Windsor Framework) mean Northern Ireland enjoys full market access to both GB and the EU. This puts Northern Ireland in the highly advantageous position of being the only region in the world able to trade goods freely with both GB and EU markets.

## Track record

- Engineering solutions
- Logistics
- Heavy steel fabrication
- World-class marine research and testing facilities
- Wind turbine operation & maintenance
- Sub-sea structures and offshore transformer platforms
- HV & LV electrical engineering, energy efficiency and energy security
- Hydrogen and alternative fuels
- Purpose-built offshore wind port facilities

## Access to a highly educated and skilled workforce

- World-class universities and an extensive network of further education colleges provide excellent academic and vocational training
- Over 42% of NI's workforce have a degree level qualification
- Northern Ireland candidates consistently outperform those from other UK regions at GCSE & A-level examinations
- Strong partnership between academia, industry and government drives skills development in the region
- Regular communication between companies, universities and government departments ensures that courses meet industry needs
- Skills conversion programmes have been created to expand the talent pool





# Northern Ireland's Financial & support package

Invest Northern Ireland can help companies discover what the region has to offer and also what financial support and grants are available. We can also help with property search, talent sourcing and business development support. A dedicated Invest NI project team will ensure your investment is a smooth process.

Invest Northern Ireland is standing ready to support your growth and make this an easy choice for your investment.

**Talent sourcing:** We'll help make relevant introductions to help you source talent needed for your future business growth and success.

**Training support:** Our Assured Skills Programme provides the necessary support to source a high-quality workforce through bespoke recruitment and pre-employment training.

**Property search and selection:** We can help with your search for suitable premises, connecting you to relevant databases and property agents in the region.

**Introductions to centres of excellence:** We'll help you connect with our universities and colleges so you can tap into our world-leading research capabilities and access talent.

**Financial incentives:** Our financial support includes grants for employment, R&D and training.

**Business networks:** We can help connect you with business networks across a range of sectors including technology, financial, professional & business services, advanced manufacturing, life and health sciences, and maritime and offshore wind.

# Northern Ireland's Research & development



## Innovation

To help increase awareness of the sources of innovation support and the benefits it can bring we created the Innovation Escalator which provides a comprehensive overview of the various strands of Invest NI support available to businesses of all sizes; from a £5,000 Innovation Voucher through to industry-led Competence Centres.

## Funding for innovation and R&D

We want more local businesses across all sectors to recognise the many facets of innovation, engage in innovation and take advantage of the full range of Invest NI support on offer.

## Research and development

- Access to UK and EU R&D programmes
- Bespoke R&D scheme for Northern Ireland based businesses
- Driving technical innovation with our "Grant for R&D" Scheme
- Businesses may have more than one project in operation at a time

## Grant for R&D and other support

Supporting both industrial research and experimental development while encouraging private sector investment in R&D projects.



# Northern Ireland's Strengths

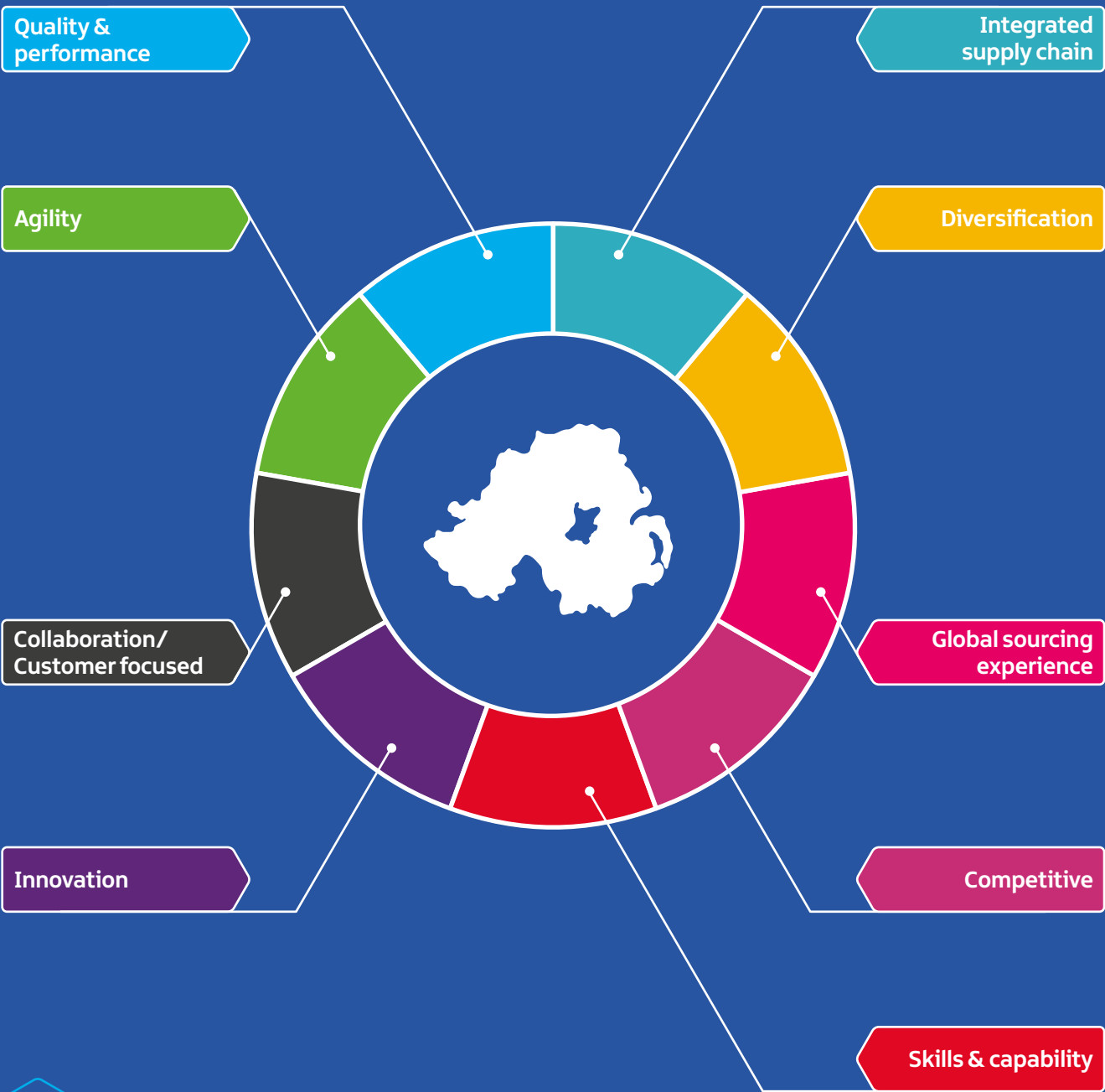
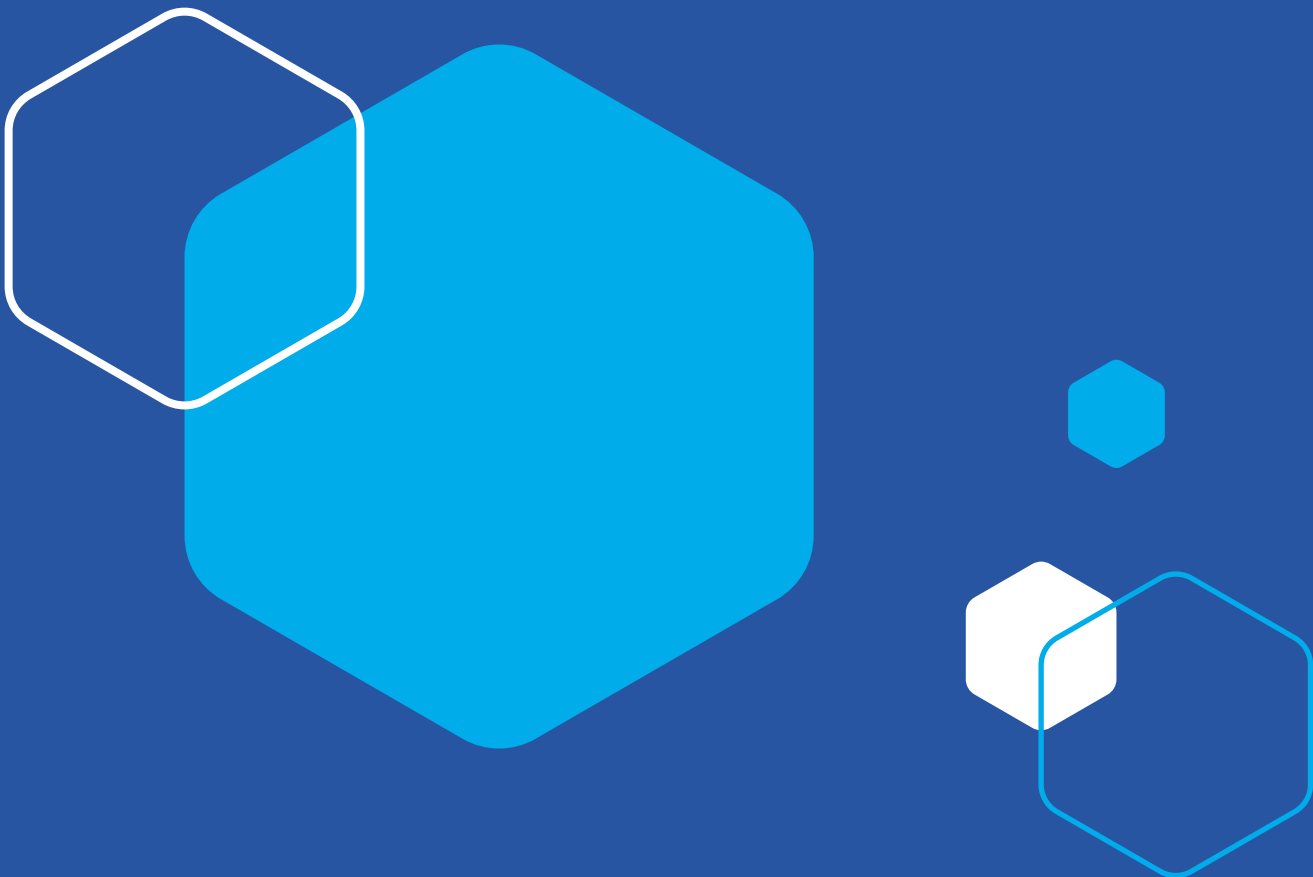
## The advanced manufacturing & engineering sector

Northern Ireland has a strong advanced manufacturing & engineering sector and associated supply chain. The region has expertise in its world-renowned maritime, offshore, aerospace, materials handling and photonics sectors. Northern Ireland is home to many global manufacturing companies that value our skilled workforce and market access.

The sector generates the greatest proportion of Northern Ireland's export sales as per Invest NI's annual KPI data (c.54% of total exports or £5bn p.a.). Innovation and digitalisation of the Maritime & offshore sectors are key to delivering sustainable manufacturing and engineering through data, machine-level decision making, automation, and the reskilling and upskilling of Northern Ireland's workforce.

Northern Ireland's advanced manufacturing & engineering sector is growing through external and export sales and is having a positive impact on the local economy. The sector helps create wealth and prosperity in the community, which in turn enhances Northern Ireland's reputation as a destination for foreign direct investment.

Northern Ireland's advanced manufacturing & engineering sector is agile with a constant drive for lean processes and efficiencies in the industry.



# Enabling capabilities & technologies



SECURING APPS,  
NETWORKS & CLOUD



IDENTIFICATION,  
AUTHENTICATION &  
ACCESS CONTROL



REAL TIME  
SECURITY & THREAT  
INTELLIGENCE



OPERATIONAL TECH (OT)  
SECURITY & CONNECTED  
DEVICES



FACTORY OF  
THE FUTURE



PHOTONICS &  
SENSORS



WIRING & COMMS  
SYSTEMS



CONTRACT  
ELECTRONICS  
MANUFACTURE



IOT REAL-TIME  
ASSET TRACKING




AI/DATA  
ANALYTICS

# Core sector capabilities




GREEN HYDROGEN/  
ALTERNATIVE FUELS




VESSEL  
MANUFACTURE




ADVANCED  
ENGINEERING



CYBER  
SECURITY



LOGISTICS




ASSET  
MANAGEMENT



ELECTRICAL ENGINEERING /  
GRID CONNECTION



SMART ENERGY  
SYSTEMS



SMART PORTS



# Northern Ireland

## Investment in innovation

Over the next ten years, Northern Ireland will benefit from a transformational package of investment from four City and Growth Deals across four regions including:

- Belfast Region City Deal
- Derry City & Strabane City Deal
- Mid South West Growth Deal
- Causeway Coast & Glens Growth Deal

A City or Growth Deal is a bespoke package of funding and decision-making powers negotiated between government and local authorities. They are aimed at helping to harness additional investment, create new jobs and speed up inclusive and sustainable economic growth.



Derry-Londonderry



AMIC, Belfast

### Advanced Manufacturing Innovation Centre

The Advanced Manufacturing Innovation Centre (AMIC) is an industry-led, open-access manufacturing and engineering innovation centre. Combining cutting-edge facilities and an expert engineering team, AMIC is driving productivity, competitiveness and growth across Northern Ireland's advanced manufacturing sector, with sustainability at its core. AMIC is a £100m innovation centre delivered through the Belfast Region City Deal, led by Queen's University Belfast in partnership with Ulster University and Antrim and Newtownabbey Borough Council.

The centre builds on 50 years of sustained innovation and industry support from the Northern Ireland Technology Centre (NITC), the Polymer Processing Research Centre (PPRC) and NI Advanced Composites and Engineering (NIACE).

With over 55 team members, AMIC delivers innovation projects from existing facilities at AMIC Queen's Campus and the AMIC-NIACE Building in Titanic Quarter, Belfast. Engineering and research teams collaborate with industrial and academic partners from across the world to develop new processes and innovative products and support the implementation of new technologies.

AMIC's flagship facility, the 10,500m<sup>2</sup> state-of-the-art 'Factory of the Future', is set to open at Global Point Business Park in Newtownabbey in 2026. The open-access facility is designed for industry use, using new pilot equipment to help companies trial new processes at scale and derisk their implementation of industry 4.0 technologies.

AMIC's core capabilities are:

- Digitalising manufacturing
- Smart design
- Sustainable polymers and composites
- Nanotechnology and photonics

The centre is reinvigorating Northern Ireland's industrial potential and addressing future technology and skills challenges faced by the region's manufacturing sector.

Companies can collaborate with AMIC through:

- Direct industry-funded R&D
- Collaborative R&D grants
- Consultancy and technical services
- Lab analysis and equipment services
- Bespoke training

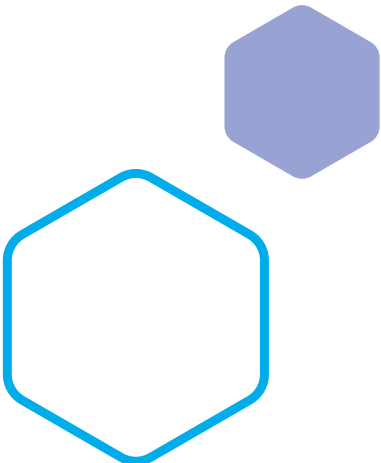




**Engineering Composites Research Centre (ECRC)**

The Engineering Composites Research Centre (ECRC) based at Ulster University has focused its efforts on developing 3D weaving for the manufacture of reinforcements (technical textiles) for composites.

The centre remains the UK leader in the development of this technology. It has developed expertise in the design, modelling and prediction of the performance of these technical textile structures and built up an integrated design and manufacture system for both flat (multi-layer) fabric reinforcements and preforms for specific components such as spars, aerofoil sections and monolithic ribs.



**UK Digital Twin Centre**

The UK Digital Twin Centre in Belfast will be the first UK national Digital Twin Centre focusing on maritime, aerospace and defence. Digital twins are essential for the future of design and manufacturing. They help organisations shorten the time to market new products, reduce material and labour costs, create new (circular) business models and reduce carbon emissions. The work delivered through the UK Digital Twin Centre will reduce the cost and time required to create and maintain a digital twin by 50%.

The UK Digital Twin Centre will reduce the barriers to digital twin development for the UK industry by establishing a common method, tools and shared platform. The project is supported by industrial partners who will deliver digital twin “Use Case” projects, enabling UK Digital Twin Centre to maximise Northern Ireland’s excellence within maritime, aerospace and defence.

The centre will also attract new use cases and bring together expertise in sensing, internet of things, communications, artificial intelligence, distributed computing and advanced visualisation. This will enable digital twins to become a permanent part of complex business operations, improving productivity and efficiency.



**Cognitive Analytics and Digital Robotics Innovation Centre (CADRIC)**

The Cognitive Analytics and Digital Robotics Innovation Centre (CADRIC) is an Ulster University led project based at the Derry~Londonderry campus in the North West of Northern Ireland. CADRIC combines the manufacturing ambitions of what is CIDRA (Centre for Industrial Digitalisation, Robotics and Automation) with CARL (Cognitive Analytics Research Laboratory) within a single facility. The facility will help to establish the Derry City and Strabane District Council region as one of the best places in the world to design, develop and launch innovative services and products relating to subjects based around bio-inspired AI and Cognitive Robotics.



- CIDRA has a specific focus on the use of AI and machine learning in smart robotic systems. The five core technologies (robotics, automation, AI, industrial internet of things and additive metallics) have now reached sufficient maturity that they provide huge opportunities and challenges for the manufacturing industry across a range of areas. CIDRA will offer a demonstration factory and testbed to allow the industry to trial innovative solutions, promote the adoption of digital technologies and de-risk capital investment. This will deliver increased productivity and competitiveness for the industry. CIDRA is also already working with industry through delivery of a £50m Smart Manufacturing Data Hub at Ulster University. This supports UK manufacturers to accelerate development and adoption of digital technologies which are key to driving manufacturing productivity, sustainability and competitiveness to deliver against the needs of the industry.
- CARL is a transformational cutting-edge applied research centre that brings together expertise and resources in bio-inspired AI and data science which are key technologies for future innovation in all business sectors. CARL will exploit advances in high performance computing to enable the application of AI, cognitive analytics and machine learning techniques to a range of industrial sectors including reg-tech, fintech, advanced manufacturing, green-tech and maritime and offshore wind.





**i4C Innovation and Cleantech Centre**

i4C will serve as a new sub-regional support hub for SME and industry led innovation activity in Northern Ireland. Offering a range of accommodation types for corporates to start-ups as well as specialist programming it will build on the region’s strengths and assets in manufacturing, engineering and energy. Set to open in 2028, i4C will support SME’s to innovate, commercialise and upskill with a particular focus across clean-tech and in the emerging green hydrogen economy. It will also support regional and national government strategy to achieve net zero and will contribute towards improving the competitiveness and productivity of local businesses seeking to trade outside of Northern Ireland.

**HyTech NI**

HyTech NI represents a £20m Northern Ireland government co-funded collaboration supporting the development of the local hydrogen economy. The project partners include Mid and East Antrim Borough Council, Queens University Belfast, Ulster University as well as several industry partners. HyTech NI will run from 2025 as an industry facing hydrogen technology accelerator programme led by the universities and the roll-out of a series of hydrogen demonstrators located in Ballymena, developed in conjunction with industry partners, Wrightbus, Firmus Energy and B9 Energy Storage Ltd. These significant scale demonstrators will focus on gas network blending, hydrogen mobility and on green skills, the latter building on the success of the award-winning council-led Hydrogen Training Academy 2022-24. Likewise, Hytech NI serves as an important investment to help NI achieve its net zero ambitions.



**Momentum One Zero (M1.0)**

Momentum One Zero is a £66m innovation centre building on proven research and industry capability in cybersecurity, wireless innovation, and artificial intelligence to tackle some of the world’s most complex challenges.

Led by Queen’s University, the centre will drive commercial value for companies at the convergence of data, AI, cyber security, and wireless technologies. Combining industry and academic expertise at its innovation hub in Titanic Quarter, Momentum One Zero is delivering solutions through the application of this tech stack across many sectors, including health, agri-food, net zero and fintech. Momentum One Zero commercial and engineering teams are on hand to understand company pain points, and co-design solutions that provide them with a competitive advantage.

The innovation centre is working with industry, locally and globally, to thrive in a digitally connected future, with access to advanced tools, technologies, and new approaches.

# Northern Ireland Maritime & Offshore Network

The Northern Ireland Maritime and Offshore Network’s overall strategic aim is to build on existing key strengths and seek to grow the Northern Ireland Maritime and offshore sectors. NIMO aims to be a globally recognised network, delivering market leading and innovative products and services to customers around the world.

**Purpose**  
To unite the Maritime and offshore sectors in Northern Ireland so that we drive local economic expansion and unlock opportunities sustainably, through innovation and collaboration.

**Mission statement**  
The Maritime and Offshore Wind Collaborative Growth Network, funded by Invest NI and member companies, seeks to bring together the maritime and offshore wind sectors in Northern Ireland, in order to develop the necessary skills, drive growth and realise opportunities through innovation and collaboration.

- Core values**
- Innovation**  
Network members are pioneers of their products and services, thriving on continual improvements, technologies and processes to the maritime and offshore sectors.
  - Driven**  
The network is an ecosystem where everyone collaborates authentically to unlock opportunities and thrive. Members have the same sense of purpose and deliver success through collaboration, trust and a focus on mutual benefit.
  - Growth**  
Members have a positive growth mindset, knowing that Northern Ireland has huge potential in the maritime and offshore sectors. Individually achieving significant growth, together being world class.
  - Authentic**  
Honesty and authenticity in all relationships, being true to beliefs regardless of external pressures. Members believe honesty, transparency, truthfulness and integrity are good for business.

Find out more about the NIMO Network at [www.nimaritime.com](http://www.nimaritime.com)





Northern Ireland  
Maritime & Offshore

# Network members















# Northern Ireland Harbour & ports



## Belfast Harbour

### Driving the NI Maritime & offshore sectors

#### Belfast Harbour - maritime hub

- Trust Port 9<sup>th</sup> largest port in the UK handling more than 23mT p.a. (more than 70% of NI's seaborne)
- 4<sup>th</sup> largest RoRo port in the UK handling over 600,000 freight vehicles and 1.8m ferry passengers
- 165 cruise ships per annum now including cruise turnaround offering
- Significant capability and expertise in offshore renewables with D1 Offshore Wind Terminal (first of its kind in the UK and Ireland)
- Developing NI's first BREEAM Excellent warehousing offering supporting NI's agri-food supply chain
- Home to H&W, the UK's pioneering offshore and maritime engineering company and to maritime innovators such as Artemis Technologies
- A key economic hub for NI. 2,000 acres of land and 27,000 workers daily, providing significant opportunities for our maritime sector to grow

#### D1 Offshore wind terminal

- Developed in 2012 by Belfast Harbour to construct the UK's first dedicated port facility for offshore wind with lease contract to occupy with Orsted, the world's largest developer of offshore wind
- 53m facility successfully used by Orsted between 2013 and 2018 to develop West of Duddon Sands, Burbo Bank Extension and Walney Extension
- From late 2018 onwards, the facility has primarily been used to handle the majority of Belfast's cruise ship calls as well as occasional project cargoes and vessel lay overs, including recent turbine blade repair contracts
- With a pipeline of offshore wind of 10 GW due to be developed in the Irish Sea (both the UK and Irish territorial waters) from 2026 onwards, Belfast Harbour is confident that D1 will return to its primary use of offshore wind construction activities for at least a decade
- This will bring significant logistics and supply chain opportunities for local companies



#### Future investment plans - D3

- Development of a 46 acre site to include 340m heavy duty quay capable of supporting floating offshore wind development in addition to cruise and project cargo (target delivery by mid 2026)
- Significant capex estimated at £140m
- Well located to service floating offshore wind development in the Celtic Sea, Northern Ireland territorial waters and Scotwind projects
- Supported by strong fabrication capabilities at H&W and significant construction sector supply chain capability

#### Maritime supply chain opportunities

- Substantial site area off Airport Road. 90 acres available for development of offshore supply chain and logistics activities
- Serviced sites available in prime location to support diverse range of maritime related activities
- Offshore energy supply chain including construction logistics, large scale O&M re-fit activities
- H&W supply chain opportunities
  - Royal Navy FSS new builds
  - Cruise ship repair/fit out
- Renewable energy opportunities
  - power generation
  - development of future fuels including marine bunkering fuels





# Foyle Port

Key facts:

- Established by an Act of Parliament in 1854 as an Independent Statutory Authority
- As a Northern Ireland Trust Port, Foyle Port has a duty to improve, maintain, regulate and manage the port and re-invest all profits for the benefit of future generations of stakeholders
- Strategic location at the mouth of Lough Foyle and a regionally significant gateway in the North West
- Cross-border role across County Londonderry and County Donegal
- Harbour Estate currently has 208 acres of land, all of which is close proximity to the sea
- Land expansion capacity of 500 acres, all of which is designated for industrial use within the Local Development Plan
- Comprises a multi-terminal deep sea port and over 400m of quay and can accommodate vessels of up to 62,000 DWT
- Significant craneage capacity, fleet of marine service vessels and extensive storage facilities for a range of product and uses
- Foyle Port is also located beside significant electricity, gas and data connection infrastructure, with excellent road networks providing quick access to the west, south and east of Ireland



- Facilitates trade from over 20 countries worldwide and handles approximately 2million tonnes of cargo per year (including coal, oil, grain, animal feed, fertiliser and plywood)
- Foyle Port has a crucial role in supporting and helping grow the local economy in the North West, attracting approximately £100m of inward investment to the region
- Foyle Port's subsidiaries, Foyle Marine Services and Foyle Engineering, provide a wide range of marine and engineering services within the Lough Foyle area and to third parties across the UK and Ireland
- Greencastle also has the potential for a deep water berthing facility (up to 12m at chart datum) which would enable significant expansion opportunities relating to renewable marine and tourism activities
- Non-Tidal Deep Water 24/7/365
- 22 acres storage
- 8 meters deep water minimum
- 500 hectares industrially zoned land
- O&M operations base for Atlantic & Irish Sea wind farms
- 440m cargo berth
- Accommodates 65,000 DWT Vessels





# Larne Port

- Key facts:**
- O&M Logistics base for offshore wind
  - 18 tonne per sq m ground loading
  - 20 acres storage & 5000sq m covered storage
  - 5 cargo berths
  - 7.1m deep water facility

Larne Port is so much more than a ferry port. It is already the port of choice for many project cargoes, particularly those associated with the offshore and renewables sector. It has direct access to the sea via a short pilotage (<2 nm) and a well marked, deep water channel, with no locks nor height restrictions.

With 50,000m<sup>2</sup> of hard standing (26t sqm) that is immediately available for component storage and a reinforced berth with a load bearing capacity of 18T sqm, the port can accommodate a range of projects, including those that require lifting and storage of heavy lifts from jack-up ships. In addition to jacking up on the deep water berth's firm sea bed, such vessels have been permitted, upon request, to berth perpendicularly to the quay, as well as carry out ship-to-ship transfers, in what are relatively sheltered waters, away from any passing commercial vessel traffic.

There is direct access to the province's motorway network via the port's main gate and 'wide-load entrance', which allows for the import of components destined for onshore wind farms, if required.



Larne Port has begun to offer much more than cargo and offshore wind operations and maintenance facilities. The port has developed strategic relationships with Tourism NI and Mid and East Antrim Borough Council to accommodate cruise vessels of up to 180m in length given its direct access to the Antrim coast.

The port also offers the potential for wet storage of wind energy foundations and is of strategic importance for access to the North Channel in the Irish Sea and the developments currently being scoped in this region for NI offshore wind.







# Warrenpoint Port

**Warrenpoint Harbour Authority – Northern Ireland's second port. Your base for searching offshore renewables.**

Warrenpoint is strategically located halfway between Dublin and Belfast on the East Coast Economic Corridor.

The port has excellent road links to the major population centres of Ireland. Warrenpoint is located less than one hour drive from both Belfast International Airport and Dublin Airport.

The port has berths with a total quay length of 750 metres. 300 metres of quay are dredged to 7.5m below chart datum and the remainder of the berths are dredged to a depth of 5.45m below chart datum. The maximum tidal range is 5.3m.



**Key facts:**

- 60 acre site, 7 berths & 70 employees
- Up to 7.5m before tidal influence
- Potential as an operations and maintenance facilities logistics base for wind farms located in the Irish and Celtic Seas
- Warrenpoint Port can handle tandem lifts and project specific cargo
- 120 ton per sq m load bearing capacity

**Current cranage capability includes:**

- 1x100 Tonne Gottwald HMK mobile crane
- 1x43 Tonne Gottwald HMK mobile crane
- 1x40 Tonne Gottwald HMK 120 harbour crane
- 1x100 Tonne Kone harbour crane



# Foyle Green Energy Park

rathbanegroup.com



**Core Activities**

Green energy renewable development site. Key features include: 620 acre development site, planning approval for data centre, 500,000sq ft of existing warehousing and office buildings for repurposing, 50MW solar PV farm in pre-application phase.

**Year Established**

2020 – asset currently owned and being developed by Rathbane (IOM) Holdings Limited

**Employee Number**

<50

**Contact**

Barry McStravick  
E : b.mcstravick@mjm-group.com  
T : +44 (0) 28 3025 8450  
W : www.rathbanegroup.com

**Address**

Former Shackleton Barracks  
Ballykelly  
BT49 9HD

The Foyle Green Energy Park is a large scale development asset owned and managed by Rathbane (IOM) Holdings.

The former army barracks is going to have in excess of 50MW of renewable generation to support high energy consumers on site including data centres, manufacturing, and other new and emerging green technologies.

**Areas of expertise:**

- Renewable energy generation
- Asset management
- Development
- Project management
- Planning & project feasibility of electronics

# Company profiles

A&L Goodbody

[algoodbody.com/belfast](http://algoodbody.com/belfast)



## A&L Goodbody Northern Ireland LLP

### Core Activities

Corporate Legal Services: Corporate and M&A, Employment & Incentives, Energy & Natural Resources, Environmental & Planning, EU Competition & Procurement, Finance, Projects & Infrastructure, Public Procurement, Public and Regulatory, Real Estate.

### Year Established

2007 in Belfast  
Head Office established in Dublin in 1901

### Employee Number

51-249

### Certifications

ISO 9001:2015 – Business Services Standard  
ISO 1400:2015 – Environmental Standard  
ISO 27001:2013 – IT and Physical Security  
Working on ISO 14001 – HSE standard

### Approvals

Legal 500: UK Tier 1 Law Firm2023, Chambers UK Top Ranked Law Firm2023, Chamber Business Awards Equality Trailblazer: Highly Commended2022, Chambers Band 1 Law Firm 2023

### Contact

Mark Stockdale  
E: [mstockdale@algoodbody.com](mailto:mstockdale@algoodbody.com)  
T: +44 (0) 28 9031 4466  
W: [www.algoodbody.com/belfast](http://www.algoodbody.com/belfast)

### Address

42-46 Fountain Street  
Belfast  
BT1 5EF

A&L Goodbody's Belfast office works with domestic and international companies and government bodies in relation to their business activities in Northern Ireland. We provide the full range of corporate legal services. We have advised on some of the most significant, challenging and complex assignments in Northern Ireland in recent years.

### Areas of expertise:

- Corporate and M&A: Commercial & technology, energy, infrastructure & natural resources
- Litigation: Environmental & planning, EU, competition & procurement, projects & infrastructure public procurement, restructuring & insolvency
- Finance: Real estate and development, acquisition and leveraged finance, project finance and financial services regulation and compliance
- Real Estate: Investment sales and acquisitions, loan portfolio transfers, development and construction, finance, tax and regulation, environmental & planning
- Employment & Incentives: Corporate immigration services, tribunal and high court representation, discrimination awareness and training, policies and procedures





## Artemis Technologies Ltd

### Core Activities

Manufacturing, Applied Technologies, Flight Control Systems, Naval Architecture, Electric Propulsion, Scientific Research and Innovation.

### Year Established

2017

### Employee Number

51-249

### Approvals

Lloyds Register Composite Manufacture Approval

### Contact

David Tyler

E: david.tyler@artemistechnologies.co.uk

T: +44 (0) 7818 844 336

W: www.artemistechnologies.co.uk

### Address

4th Floor, Concourse 2,  
Queens Road  
Belfast  
BT3 9DT

Founded in 2017, Artemis Technologies is a world leading high-performance maritime design and applied technologies company with a mission to decarbonise the maritime industry. The company develops 100% electric, zero-emission vessels and electric propulsion systems and is also home to the world's most advanced marine simulator.

### Areas of expertise:

- Innovative Technology: Patented Artemis eFoil® system, a revolutionary zero-emission propulsion solution for high-speed maritime transport
- Digitalisation: State-of-the-art simulation, Computational Fluid Dynamics (CFD), flight control and telematics software
- Advanced Engineering: Covering a wide range of disciplines such as structural, electrical, mechanical and hydrodynamics
- Research and Design: Naval architecture, design optimisation and scientific research
- Manufacturing: Assembly, testing and vessel operations specialising in composites and integration of electronics



## Barton Industrial Services

### Core Activities

Leading provider of services to the onshore and offshore wind turbine industry. Providing statutory examinations, maintenance and repair to wind turbine internal components. Suppliers and Installers for Work At Height and Fall Protection Systems.

### Year Established

1986

### Employee Number

<50

### Certifications

ISO 45001:2018, ISO 9001:2015, ISO 14001:2015, SafeContractor SSIP, SafePQQ PAS91, Lifting Equipment Engineers Association, Construction Employers Federation, SafetyOn Member

### Approvals

VESTAS, NORDEX, ENERCON, RES, WOODGROUP, ABO, BAYWA, ENERGIA, ENERGYPRO, NATURAL GENERATION, VECTOR QUATRO

### Contact

Mark Robinson

E: markrobinson@bartonsafetyservices.com

T: +44 (0) 7818 412 540

W: bartonsafetyservices.com

### Address

Unit C1, Harbour View  
Heron Road  
Belfast  
BT3 9LE

Barton Safety Services benefits from 30 years of sustainable growth and expansion. Our success is demonstrated by long term trusted partnerships fostered with our customers throughout Great Britain, Ireland and Europe. Our skilled dedicated staff give us the strength and ability to deliver reliable and cost effective solutions and services.

### Areas of expertise:

- 3rd party impartial statutory examinations
- 15 years of experience within the wind industry
- Expert in Fall Protection Systems with the support of KEE SAFETY GROUP
- Skilled technicians with industry training by LEEA and various OEMs
- Back of house support with qualified professionals for every department including operations, technical and health & safety



[casconline.co.uk](http://casconline.co.uk)



With a dedicated renewables and engineering division, CASC delivers expert solutions to the offshore renewables industry, specialising in quayside mobilisation, pre-assembly, and vessel mobilisation. Our team has a proven track record across more than 40 global projects, ensuring efficiency, safety, and quality at every stage.

Working directly with Tier 1 contractors, we have extensive experience in mechanical, electrical, civil engineering, and heavy lift operations in ports and harbours across Europe, Asia, and the USA.

Our capabilities include the design and manufacture of temporary and permanent working platforms, entrance platforms, WTG components, sea fastenings, electrical infrastructure, distribution panels, power containers, transformers, stairs, handrails, gates, blade mounts, and transport and lifting equipment. As a true end-to-end turnkey service provider, we work with all major components, including wind turbines, jacket foundations, transition pieces, monopiles, and tower foundations.

Backed by our dedicated, modern, and highly capable engineering division, we remain agile and in full control of the supply chain.

Operating globally, we overcome challenges with an engineering-backed, solutions-driven approach. By minimising delays, controlling costs, and optimising performance, CASC ensures projects are delivered on time, every time.

**Areas of expertise:**

- Pre-assembly works at mobilisation and demobilisation stages
- Design and manufacture of ancillary components
- Full electrical site set up
- Design and provision of mobile switch rooms
- Project management consultancy and support

**CASC Ltd**

**Core Activities**  
Renewables, Engineering, Electrical

**Year Established**  
2014

**Employee Number**  
51-249

**Approvals**  
ISO 9001:2015, ISO 14001:2015, ISO 45001:2015, EN1090, NICEAC

**Contact**  
James McGrillis  
**E** : [info@casconline.co.uk](mailto:info@casconline.co.uk)  
**T** : +44 (0) 28 9507 2400  
**W** : [www.casconline.co.uk](http://www.casconline.co.uk)

**Address**  
12A Altona Road East  
Blaris Industrial Estate  
Lisburn  
BT27 5QB



[catagen.com](http://catagen.com)



**CATAGEN Ltd**

**Core Activities**  
Green emissions testing in the development of new vehicles to meet regulatory standards: Catalyst ageing, Characterisation, Precious Metal Optimisation. In development - Net Zero Technologies in: Green Hydrogen Production (not an electrolyser), E-Fuel Production, Bio-Hydrogen, Compression, Carbon Capture.

**Year Established**  
2010

**Employee Number**  
51-249

**Certifications**  
ISO 9001, Cybersecurity Essentials Plus, Security Cleared Staff

**Approvals**  
CATAGEN is approved by the UK VCA (Vehicle Certification Agency) for the purposes of witness testing EU accelerated ageing of exhaust gas aftertreatment hardware. CATAGEN is approved by Applus IDIADA (Europe) and TUV (Germany). CATAGEN have also supported automotive manufacturers gain approval in countries including the US (EPA and CARB), India and China.

**Contact**  
Sonya Kerr  
**E** : [sonya@catagen.com](mailto:sonya@catagen.com)  
**T** : +44 (0) 28 9045 5100  
**W** : [www.catagen.com](http://www.catagen.com)

**Address**  
Channel Commercial Park, Queen's Road  
Titanic Quarter  
Belfast  
BT3 9DT

CATAGEN provides patented green emissions testing services to global OEMs. Its expertise in the mobility sector and global emissions standards have led the company to develop new technologies including: **Green Hydrogen (not an electrolyser) and Biohydrogen Generators, E-Fuel Reactors, Hydrogen Compression and Carbon Capture to clean and decarbonise the air.**

**Areas of expertise:**

- Replicating real world exhaust conditions in a patented recirculating gas reactor
- Our unique OMEGA technology can reproducibly replicate engine flow rates, temperatures and gas compositions for: Standard gasoline/diesel; Hybrid powertrains; E-Fuels, hydrogen combustion, biofuels, ethanol/natural gas engines
- Catalyst Ageing and Characterisation, Fuels and Lubricants Testing, Collaborative Research Projects
- Using this knowledge to develop new net zero technologies for difficult to decarbonise sectors







causewaygeotech.com



## Causeway Geotech Ltd

### Core Activities

Ground investigation contractor

### Year Established

2012

### Employee Number

51-249

### Certifications

ISO 9001:2015, ISO 14001:2015, ISO 45001:2018

### Contact

Darren O'Mahony  
**E:** darren.omahony@causewaygeotech.com  
**T:** +44 (0) 7738 675 175  
**W:** www.causewaygeotech.com

### Address

8 Drumahiskey Road  
 Balnamore  
 Ballymoney  
 BT53 7QL

Causeway Geotech, a member of the Sealaska group of companies, is an industry leading ground investigation contractor who specialises in land and nearshore projects. The company delivers a turnkey package comprising a broad range of land and marine ground investigation techniques to inform geotechnical and environmental conditions of sites.

### Areas of expertise:

- Ground investigation for harbour developments, bridges and offshore wind
- Cable routes and HDD assessments
- Various drilling and CPT testing systems, including seabed options
- Owner and operator of a fleet of jack-up barges
- Laboratory testing with a UKAS accredited testing house



ccp-gransden.com



## CCP Gransden Advanced Composites

### Core Activities

Specialist composites manufacturing and engineering.

### Year Established

1984

### Employee Number

<50

### Certifications

ADS SC21 Gold, ADS SC21 Competitiveness & Growth, JOSCAR, Cyber Essentials Plus, NI Platinum Level Innovator, ISO9001, AS9100, Company-wide BPSS Vetting

### Approvals

Composites UK Skills Pledge, Armed Forces Covenant, Onboarded supplier to Babcock, Onboarded supplier to Harland & Wolff, Onboarded supplier to Thales, Onboarded supplier to MBDA, Onboarded supplier to Rolls Royce, Composites UK Member, NI Maritime & Offshore (NIMO) Member, ADS Member, Make UK Defence Member, National Composites Centre Partner, NI Chamber of Commerce and Industry Member, NI Space Member

### Contact

Paddy Eskine  
**E:** sales@ccp-gransden.com  
**T:** +44 (0) 28 9752 8501  
**W:** www.ccp-gransden.com

### Address

17 Moss Road  
 Ballygowan  
 Co. Down  
 BT23 6JQ

CCP Gransden offers a wide range of in-house composite manufacturing processes to meet the needs of clients across various industries, including maritime and defense. Its skilled team has supported numerous projects, often delivering in-situ solutions. A trusted partner for critical contracts, it provides reliable and innovative composite solutions.

### Areas of expertise:

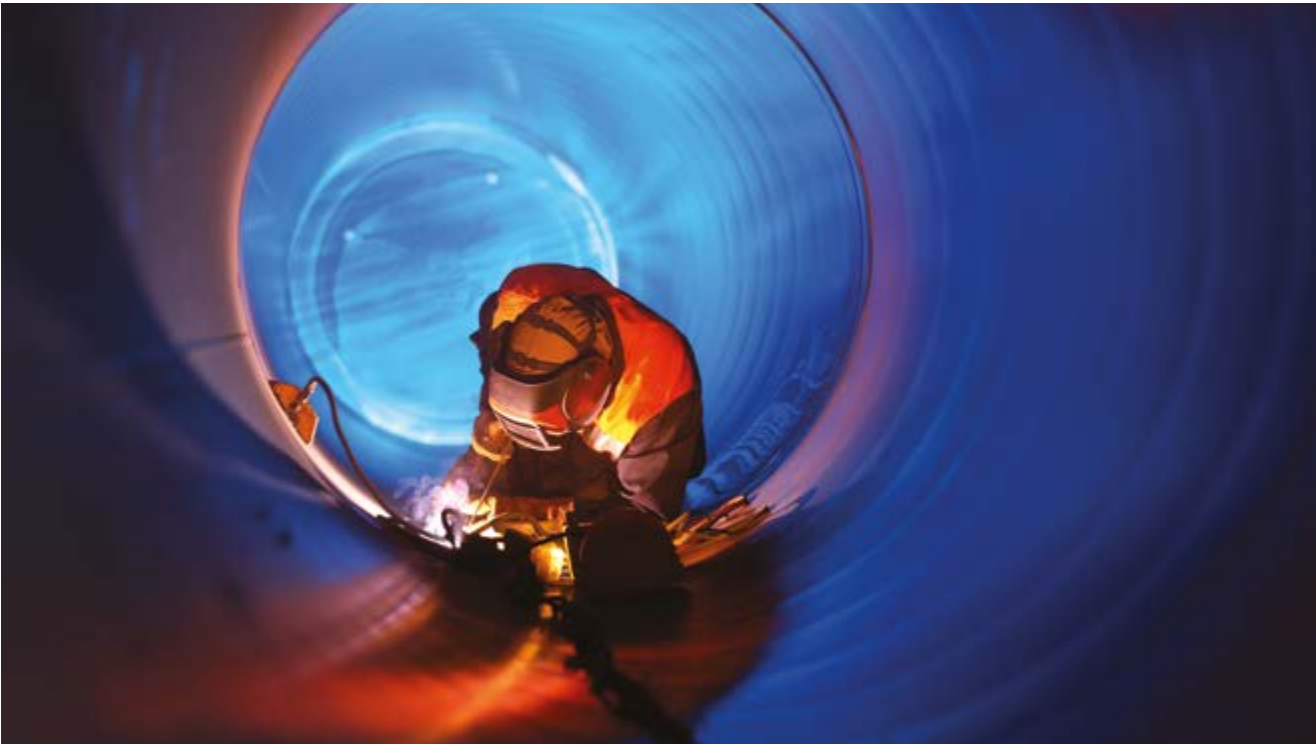
- Adaptable Manufacturing Facility: One of the UK's widest selection of composites manufacturing processes available in-house
- Filament Winding: Specialist capability
- High Volume Manufacturing Cell: Thermosets - compression moulding, RTM, HPRTM. Thermoplastics - thermoforming, overmoulding
- Infusion: Resin infusion at various scales and complexities; hulls, bridges, turbine blades
- GRP: Comprehensive high-quality processes





ENGINEERING \ EXCELLENCE

cimpina.com



Cimpina Ltd

**Core Activities**  
Metal Fabrication & Pipework, Coded Welding

**Year Established**  
1991

**Employee Number**  
<50

**Certifications**  
ISO9001, EN1090 Execution Class 3, Siemens Gamesa  
Approved for Critical Components

**Approvals**  
Notified Body Classification Welding Approvals to  
ASME, EN15614 and EN9606

**Contact**  
Paul Hamilton  
E : paul@cimpina.com  
T : +44 (0) 28 9074 7710  
W : www.cimpina.com

**Address**  
4 Duncrue Street  
Belfast  
BT3 9AQ

Located 166m from Belfast Port quayside, Cimpina Engineering is perfectly placed to service the offshore wind & marine markets. We work with jack up vessel operators, turbine manufacturers, shipyards, shipowners, port authorities and civil construction companies.

- Areas of expertise:**
- Port infrastructure metalworks including temporary works, gangways
  - Ship pipework – new, replacement and repair
  - Wind Turbine Installation Vessel (WTIV) – class approved repair/modifications
  - Steel works and support structures for offshore wind preassembly, load out and O&M
  - Thick plate fabrications; aluminium structures and pipework



clarksons.com/port-services



Clarksons Port Services Ltd

**Core Activities**  
Integrated Logistics Management

**Year Established**  
2002

**Employee Number**  
51-249

**Contact**  
Paul Young  
E : paul.young@clarksons.com  
T : +44 (0) 7776 599 112  
W : www.clarksons.com/port-services

**Address**  
Lincoln Building  
Great Victoria Street  
Belfast  
BT2 7SL

Clarksons Port Services is dedicated to supporting marine and port operations and delivering integrated logistics management services. We provide turnkey solutions for the provision of port agency, customs clearance and consultancy, crew change coordination, helicopter operations, freight forwarding, project logistics, warehousing & storage, bunker supply, quayside logistics management and supply chain management.

- Areas of expertise:**
- Turnkey vessel support including ships agency, vessel chartering, bunkering and support base operations
  - Freight forwarding and project logistics
  - Crew change management including helicopter operations
  - Customs clearance and consultancy
  - Supply chain management





continuenenergy.com



### Continu Ltd

#### Core Activities

Backup Power and Battery Energy Storage Systems

#### Year Established

2010

#### Employee Number

<50

#### Certifications

ISO:9001:2015/ISO 14001:2015/ ISO 45001:2018  
Aligned to 5 UNSDG's

#### Approvals

APC/schneider - Approved Partner, Riello - Approved Partner, Vertiv - Approved Partner, Socomec - Approved Partner, Polarium – Approved partner  
BT – Approved Supplier, Finalist – Best Sustainable Business – Irish News 2023, Winner – ‘Employer For The Future’ Workplace and Employment Awards – Irish News 2023, Winner – Belfast Telegraph Business Awards – SME - 2023, Winner Belfast Telegraph IT awards – ‘Supplier of the Year’ 2023, IOD Director of The Year ‘Innovation’ – Shortlisted 2023

#### Contact

Alison McFadden

E: ali@continuenenergy.com

T: +44 (0) 28 9045 4900

W: www.continuenenergy.com

#### Address

9 Harbour Court  
Heron Road  
Belfast  
BT3 9HB

Continu specialise in Backup Power (UPS) and Battery Energy Storage Systems (BESS) for commercial and industrial applications. Continu have expert in-house ability to deliver site wide power infrastructure including R&D design, supply, install and ongoing onsite and remote monitoring support, cost-effectively and sustainably. Trusted by mission critical multi-sites throughout Ireland and the UK.

#### Areas of expertise:

- Uninterruptible Power Supply Systems (UPS) - supply, install, maintain, remote monitoring
- Vendor agnostic – partner to global brands, Schneider APC, Vertiv, Riello, Socomec
- Battery Energy Storage (BESS) – partner to brand leaders in C&I markets
- Full turnkey project – specialist team, driven by purpose, lean thinkers -design, supply, install, maintain
- In- house ‘value stack’ capability of projects including energy trading

# Copius Group

Supporting Projects Globally

copiusgroup.com



### Copius Group

#### Core Activities

Construction, Mechanical, Electrical & Instrumentation and Access Solutions

#### Year Established

2008

#### Employee Number

250+

#### Certifications

ISO 9001, ISO 45001, Safex Inspectie - NEN-EN 4400-2, NEN 4400-1, Safe Contractor, Eco Vadis

#### Contact

Yvonne Flemming

E: Yvonne.flemming@copiousgroup.com

T: +44 (0) 28 9058 9500

W: www.copiousgroup.com

#### Address

303a Antrim Road  
Newtownabbey  
Co Antrim  
BT36 7AP

Copius Group is an international provider of construction engineering and specialist contracting solutions within the renewable energy, power generation and oil & gas industries on and offshore. Copius' technical team work on all stages of the project life cycle from design through to construction, installation, testing, commissioning, operations and maintenance.

#### Areas of expertise:

- Construction - comprehensive offshore construction services from initial design and installation through to commissioning and handover
- Electrical & Instrumentation - design through to construction, start-up, testing, installation and commissioning and to on-going maintenance and repair
- Mechanical - design and pre-construction through to installation, commissioning, repair and refurbishment, and ongoing maintenance
- Access Solutions – from scaffolding and rope access to elevated platforms and other specialist methods





## Creative Composites Ltd

### Core Activities

Manufacture of composite components: compression moulding, resin transfer moulding (RTM), light resin transfer moulding (LRTM), infusion, out-of-autoclave prepreg, hand lay-up, paint, assembly.

### Year Established

2000

### Employee Number

51-249

### Certifications

ISO 45001 – Health & Safety, ISO 9001 – Quality Management System, IATF 16949 – Automotive Management Systems, ISO 14001 – Environmental Management Systems

### Contact

Stephen Hewitt  
E: stephen.hewitt@creativecomposites.co.uk  
T: +44 (0) 28 9694 6562  
W: www.creativecomposites.co.uk

### Address

1 Ferguson Drive  
Lisburn  
Co. Antrim  
BT28 2FW

Creative Composites is the UK's most advanced composite manufacturer and is at the forefront of delivering innovative composite solutions across a range of industries. Since its formation in 2000, the company has invested heavily in the latest technologies within their purpose built 150,000sq/ft factory based in Northern Ireland.

### Areas of expertise:

- Compression Moulding: Creative Composites houses two of the largest presses in the UK to manufacture composite components
- Composite Manufacturing: Specialise in different composite manufacturing processes to cater for low to high volume supply
- Design: Experienced design team who collaborate with customers from concept through to mass production
- Technologies: World class manufacturing through 5-axis CNC machining, 6-axis robotic handling and assembly, paint, CMM inspection
- Market: Supply into industries such as marine, automotive, off-highway, defence, medical, oil and gas



## Cunningham Covers Ltd

### Core Activities

Maritime Manufacturing, Marine Aquaculture

### Year Established

1969

### Employee Number

51-249

### Certifications

ISO 9001

### Contact

Peter Smith  
E: peter@cunninghamcovers.co.uk  
T: +44 (0) 28 7964 2638  
W: www.cunninghamcovers.co.uk

### Address

Glenshane Industrial Park  
Tobermore Road  
Maghera  
BT46 5DR

Manufacturer of Clever Protective Covers used in the renewables sector. Specialising in the production of transition piece covers to protect equipment and workers during the installation of wind turbines. Marine Aquaculture applications include; fresh-water treatment bags, fresh water storage bags, lice skirts, and other custom tarpaulin textile products.

### Areas of expertise:

- Wind turbine transition piece covers
- Umbilical cable reel covers
- Fish farm fresh water treatment bags
- Fish farm lice skirts
- Silt curtains





decomengineering.co.uk



## Decom Engineering Ltd

### Core Activities

Decommissioning, subsea and onshore cutting

### Year Established

2011

### Employee Number

<50

### Certifications

Fit 4 Offshore Renewables Program participant

### Contact

Arnold Goloncser

E: arnold@decomengineering.com

T: +44 (0) 7413 545 040

W: www.decomengineering.co.uk

### Address

55 Upper Mullan Road  
Ballinderry  
Cookstown  
Co. Tyrone  
BT80 0JE

Decom Engineering specialises in subsea decommissioning, pipe coating removal solutions and cutting solutions for both subsea and onshore projects. Our expertise spans decommissioning, renewable energy, salvage operations and submarine cables, delivering innovative and reliable solutions across various industries.

### Areas of expertise:

- Oil and gas decommissioning
- Inspection, maintenance and repair cutting scopes
- Renewable export cable cutting
- Pipe coating removal
- Subsea and onshore cutting operations



deromein.nl/en



## De Romein Nearshore Ltd

### Core Activities

Subsea Cables, offshore wind and marine civil engineering.

### Year Established

2022

### Employee Number

<50

### Certifications

ISO45001 H&S Management , ISO9001 Quality Management, ISO14001 Environmental

### Approvals

IJUBOA, IMCA

### Contact

John McGill and Jamie Howard

E: jhoward@deromein.co.uk

T: +44 (0) 28 9202 7771

W: www.deromein.nl/en/

### Address

282 Moira Rd  
Lisburn  
Co. Antrim  
BT28 2TU

De Romein Nearshore is primarily focused on marine civil engineering and renewables for the subsea cable and offshore wind sector where cables make landfall from offshore windfarms or from country to country.

Although established in Northern Ireland it carries out work in France, Denmark and Germany as well as the UK and Ireland.

De Romein Nearshore's team are specialists in nearshore installations consisting of technical engineering for a full delivery package to clients in the challenging nearshore marine environments.

### Areas of expertise:

- Marine Civil Engineering: Subsea construction, piling works, demolition, marine outfalls
- Marine Renewables: Subsea cable landing, marine support and logistics
- Dredging: Company owned and operated self-propelled backhoe dredger, jack up barges, flat top barges, RHIBS
- Diving: Proven track record for challenging diving operations and projects in the UK and Europe, and most recently in France and Germany
- Survey: Survey works and vessel and the latest industry standard survey equipment





dhl.com



## DHL Global Forwarding (UK) Ltd

### Core Activities

Provider of international logistics services via air, ocean, road and rail. Specialists in industrial projects for the movement of outsize goods/equipment, providing bespoke solutions.

### Year Established

1815

### Employee Number

250+

### Certifications

ISO 9001, ISO 45001, ISO 14001

### Contact

Gary Reilly  
E: gary.reilly@dhl.com  
T: +44 (0) 7753 628 125  
W: www.dhl.com

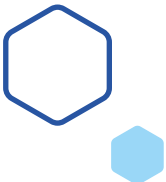
### Address

Unit 6 New Cargo Building  
Belfast International Airport  
BT29 4GB

At DHL Global Forwarding Industrial Projects, we're here to help simplify global trade for your business, moving your goods to the places they need to be. We have a wealth of experience across the renewables sector with dedicated teams in strategic locations to facilitate the management of international movements.

### Areas of expertise:

- Air and ocean chartering
- Heavy Lift - domestic and international transportation
- Sequencing planning, supervision, and execution
- Wind industry competence center
- Hub management



diverltd.com



## Diver Ltd

### Core Activities

Project services and subsea engineering

### Year Established

2016

### Employee Number

<50

### Contact

Ryan Diver  
E: ryan.diver@diverltd.com  
T: +44 (0) 7545 312 573  
W: www.diverltd.com

### Address

146 Church Road  
Holywood  
Co. Down  
BT18 9BZ

Diver Ltd is an ambitious project and engineering consultancy based in Northern Ireland, trusted to provide independent and impartial services across the engineering sector. With an analytical, data-driven approach and thoughtful AI integration, Diver delivers innovative solutions to the toughest challenges facing its clients and their customers.

### Areas of expertise:

- Project analysis: Transforming client data and information into actionable insights to drive unprecedented project success
- Problem-solving: Delivering tailored solutions to overcome complex project and business challenges
- Project execution: Providing robust project oversight to minimise risk and ensure successful delivery
- Subsea engineering: Offering expert design, analysis, and advisory services for subsea projects
- Artificial Intelligence: Leveraging AI to reimagine project execution and decision-making







doyleshipping.uk



Doyle Shipping Group Unlimited

**Core Activities**  
Stevedoring, ships agency, warehouse, logistics, terminal operations, qualified operation staff, mobilisation and demobilisation set up facilities.

**Year Established**  
1853

**Employee Number**  
51-249

**Certifications**  
ISO 9001:2015, ISO 14001:2015, ISO 45001 2018

**Contact**  
Sean McCready  
E: smccready@dsg.uk  
T: +44 (0) 28 9075 5881  
W: www.doyleshipping.uk

**Address**  
101 Airport Road West  
Belfast  
BT3 9ED

Doyle Shipping Group's (DSG) role is to provide shipping services to previous and new clients to Northern Ireland. Its previous experience in the renewable energy market shows that it is a reliable, conscious port and logistics company. DSG understands the requirements for successful energy projects providing a quality service.

- Areas of expertise:**
- Stevedoring
  - Project logistics from site set up to site demob
  - Pre-assembly works and site infrastructure
  - Qualified GWO personnel for various tasks
  - Ships agency, customs clearance and warehousing



drmaritimeassets.com



DR Maritime Assets Ltd

**Core Activities**  
Marine survey, guard vessels and offshore support

**Year Established**  
1997

**Employee Number**  
51-249

**Certifications**  
ISO 9001, ISO 14001, ISO 45001

**Approvals**  
Achilles, Ariba, IMCA

**Contact**  
Russ Shepcar  
T: +44 (0) 7708 230 074  
W: www.drmaritimeassets.com

**Address**  
The Nautilus Centre  
The Harbour  
Kilkeel  
BT34 4AX

DR Maritime Assets Ltd is the UK's largest owner operator of bespoke guard and offshore support vessels. It can offer a variety of vessels for guard, support and survey roles, including the Ivero, their 34m survey vessel. It is also supported by a pool of regular sub-contract vessels for larger projects.

- Areas of expertise:**
- Bespoke guard vessel solutions tailored to client's requirements. Full vessel support by an in-house engineering team
  - 18 vessels currently under company ownership providing continuity and consistent quality throughout the fleet
  - Project management, survey services, bouy deployment and recovery, geo technical surveys, fishers liaison
  - Time served and highly experienced masters, mates, engineers and crew
  - Project support software offering instant live reporting from vessel to shore.





ehsinternational.com



## EHS International (UK)

### Core Activities

Environmental, health and safety services for business and industry

### Year Established

2023

### Employee Number

51-249

### Contact

Kevin Howlette  
E: kevinhowlette@ehsint.com  
T: +44 (0) 7730 929 207  
W: www.ehsinternational.com

### Address

Catalyst – The Innovation Centre Belfast  
Queens Rd  
Belfast  
BT3 9AD

Chris Mee's EHS International provides leading environmental, health, and safety (EHS) services that help organisations achieve compliance and improve workplace safety. With offices in Dublin, Cork and Belfast, EHS International offers a range of EHS service solutions for both public and private sector clients.

### Areas of expertise:

- EHS, risk management and training
- Port and shipyard emergency response team
- Technical recruitment and placement
- Safety technical solutions
- Fire safety services: lithium-ion battery safety services



elecsys.co



## Elecsys Technologies Ltd

### Core Activities

Construction, Mechanical, Electrical & Instrumentation and Access Solutions

### Year Established

2023

### Employee Number

<50

### Contact

Ryan Murphy  
E: ryan.murphy@elecsys.co  
T: +44 (0) 7843 955 896  
W: www.elecsys.co

### Address

5th Floor Suite 2 The Cai Building Coble Dene  
Royal Quays  
North Shields  
NE29 6DE

Elecsys Technologies is the development and support organisation behind Elecsys; a cloud-based multi-modular software platform empowering owners and operators of electricity networks to make informed decisions on the operation of their network, manage risk, exercise best operational and safety practices and enhance network performance - all in one place.

### Areas of expertise:

- Electricity network operational and safety management
- Asset management philosophy & strategy implementation
- Operations and maintenance programming & delivery





everun.ltd



**Everun Ltd**

**Core Activities**

Specialists in energy management, and the provision of energy solutions, including wind turbine build, operations, maintenance and management services; provision of Solar PV, EV Chargepoint installations and smart energy efficient motor solutions for HVAC systems.

**Year Established**

2010

**Employee Number**

51-249

**Certifications**

ISO 9001:2015, ISO 14001, ISO 45001

**Contact**

Ross Moffett  
E: ross.moffett@everun.ltd  
T: +44 (0) 28 9692 2513  
W: www.everun.ltd

**Address**

37 Dargan Road  
Fortwilliam Business Park  
Belfast  
BT3 9LZ

For over 10 years Everun have been specialists in energy management, now managing a portfolio of 160 wind turbine generators throughout Ireland. We have provided guidance to a wide range of businesses in implementing integrated energy solutions.

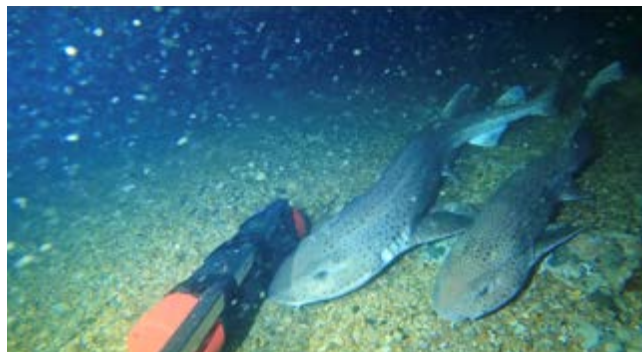
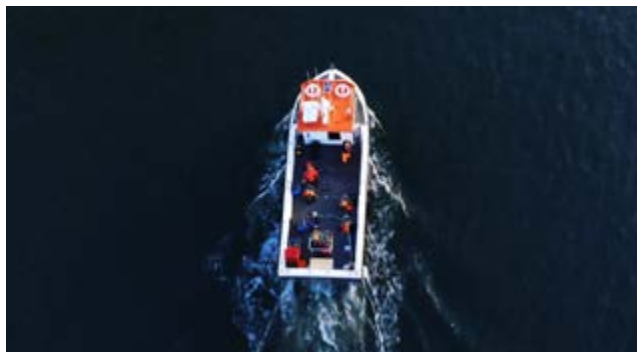
We have an experienced team of wind turbine and electrical engineers and offer a full suite of products and services tailored to match each business' needs, helping them to reduce costs, protect against volatile energy markets, optimise productivity, slash their carbon footprint and improve their brand reputation.

**Areas of expertise:**

- Wind turbine build, operations and maintenance, single site and wind farms
- Management and monitoring of energy assets such as wind turbines and other energy generating assets
- Battery energy storage & solar PV installation
- Large scale decarbonisation projects
- Energy efficiency modelling, carbon mapping, project planning & approvals



fjordstrong.com



**FjordStrong Ltd**

**Core Activities**

Marine environmental surveying, Consenting process, Statutory monitoring, Conservation research

**Year Established**

2019

**Employee Number**

<50

**Certifications**

ISO 9001, ISO 27001, ISO 14001

**Contact**

Ruairi Gallagher  
E: ruairi@fjordstrong.com  
T: +44 (0) 7503 099 050  
W: www.fjordstrong.com

**Address**

63 University Road  
Belfast  
BT7 1NF

FjordStrong is a marine environmental consultancy specialising in 3D-video technologies to produce cost-effective and robust biodiversity data for the offshore industry and conservation efforts. Combining years of experience with a patented design and research-backed methods, we provide a suite of non-destructive solutions to fast-forward the biodiversity goals of your project. FjordStrong is a commercial spinout from Queen's University Belfast.

**Areas of expertise:**

- Zero-impact population assessments of marine biodiversity and environmental measurements
- Non-invasive length and biomass measurements using photogrammetry
- Habitat and Biotope Mapping using ROVs and Tow fish cameras
- EIA, AA and other consenting process requirements from baseline to long-term monitoring programs
- Visual outputs from survey data for enhanced stakeholder engagement to bolster and showcase project impacts





fmenvironmental.com



## F M Environmental Ltd

### Core Activities

Marine grease separators for galley wastewaters.  
Wastewater and clean water pumping stations.  
Mechanical electrical installation work

### Year Established

1987

### Employee Number

51-249

### Certifications

ISO14001, ISO9001, ISO18001, SSIP

### Approvals

For Grease traps: PDI-G101, ASME A112.14.2,  
SHASE S217, EN1825-1, IAPMO, Irish Water  
approved contractor

### Contact

Michel Fitzpatrick  
E: michel@greaseguardian.com  
T: +44 (0) 7918 020 246  
W: www.fmenvironmental.com  
www.greaseguardian.com

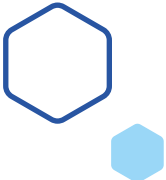
### Address

Unit 6 Greenbank Industrial Estate  
Newry  
Co. Down  
BT34 2QX

FM Environmental is one of Northern Ireland's longest established wastewater engineering companies, specialising in pumping and wastewater treatment. Its Grease Guardian Division is a world leader in the manufacture and supply of grease separators for professional kitchens, including on board commercial, private and military vessels.

### Areas of expertise:

- Grease management
- Bespoke and standardised pumping stations
- MEICA project management
- Servicing of mechanical/electrical equipment for the water industry



gdgeo.com



## Gavin & Doherty Geosolutions (UK) Ltd

### Core Activities

Engineering and consultancy

### Year Established

2011

### Employee Number

51-249

### Certifications

ISO 45001:2018, ISO 9001:2015, ISO 14001:2015

### Contact

William Brown  
E: wbrown@gdgeo.com  
T: +44 (0) 7825 037 545  
W: www.gdgeo.com

### Address

Scottish Provident Building  
7 Donegall Square West  
Belfast  
BT1 6JH

Gavin & Doherty Geosolutions (GDG), a Venterra Group Company, are experts at finding innovative solutions to support the most challenging offshore wind, marine and infrastructure projects around the world. Offering advice, consultancy support and engineering expertise, their specialist team develop the most sustainable design solutions for clients.

### Areas of expertise:

- Ports & harbours design & consultancy
- Offshore marine advisory
- Survey management
- Ground modelling
- Offshore design & consultancy
- Transport & installation consultancy







gegridsolutions.com



## GE Grid Solutions (UK) Ltd

### Core Activities

Asset Monitoring

### Year Established

1892

### Employee Number

250+

### Certifications

ISO 14001:2015, ISO 45001:2018, ISO 9001:2015

### Approvals

Our Factory is powered 100% Green Energy with NI Windfarm

### Contact

Martin Singh  
E: Martin.Singh@ge.com  
T: +44 (0) 7721 248 260  
W: www.gegridsolutions.com/md.htm

### Address

Unit 1, 7 Lissue Walk  
Lissue Industrial Estate East  
BT28 2LU

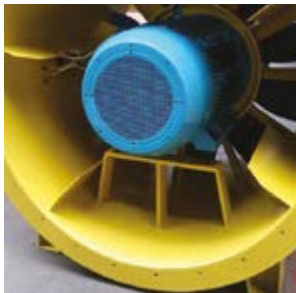
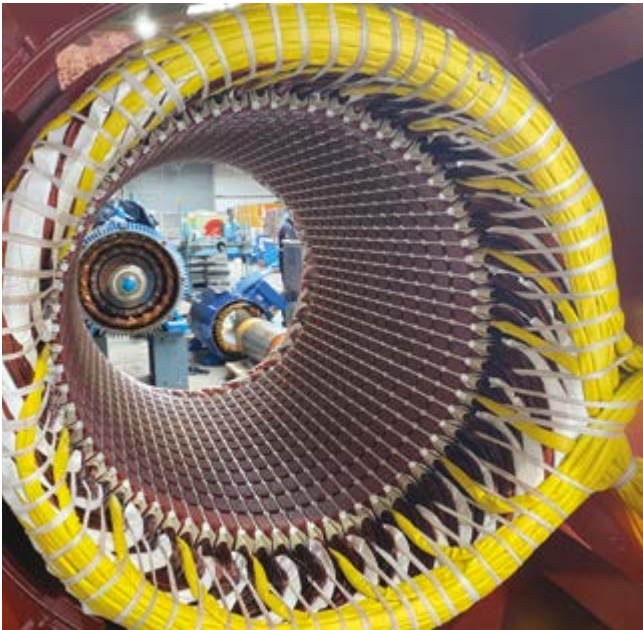
GE offers a wide range of solutions to monitor and manage critical assets on the electrical grid, detect and diagnose issues and provide expert information and services to customers. Our asset monitoring and diagnostics portfolio includes solutions for single- and multi-gas transformer DGA, enhanced transformer solutions and switchgear monitoring, as well as software and services.

### Areas of expertise:

- Dissolved Gas Analyser (DGA) - Hydran, Minitrans, DGA 500, DGA900, DGA 900 Plus, DGA 900 Multitrans, DGA900 TapTrans and Transport X2
- Transformer Monitoring System (TMS)- MS3000
- Bushing Monitor- BMT 430
- Circuit breaker Monitor-CB Watch3
- Asset performance management (APM) software- EnergyAPM Edge, EnergyAPM Lite, EnergyAPM Enterprise



ges-group.com



## GES Group Ltd

### Core Activities

Electric Motor Repairs and New Motor Sales, LV/HV Electrical Installations, Maintenance & Servicing, Breakdown Service, Vibration Analysis & Dynamic Balancing, Automation, Drives, Switchgear & Controls Distribution, Electrical Control Panel Design, Build & Installation, Renewables, Power Quality & Harmonics analysis.

### Year Established

1977

### Employee Number

51-249

### Certifications

ISO 9001, ISO14001, ISO45001. NICEIC

### Approvals

IET, AEMT, ATEX, COMPEX

### Contact

David Moore  
E: dmoore@ges-group.com  
T: +44 (0) 28 2565 6406  
W: www.ges-group.com

### Address

18a Pennybridge Industrial Estate  
Ballymena  
BT42 3HB

GES Group, an award-winning and industry-leading organisation, provide power and energy solutions for SMEs and large multi-nationals across a range of industries in the UK, Ireland and beyond. The group has a strong and long-standing trading history extending in growth across a significant number of industry sectors, in their drive to develop the renewable energy goal.

### Areas of expertise:

- Wind energy – installation, grid connection, re-manufacture and maintenance
- Smart energy storage solutions – combining power quality and integrated energy management software
- Biomass and anaerobic digestion – installation M&E, grid connection and preventative maintenance
- Industrial solar energy – photovoltaic and solar thermal technologies, installation and connection
- Hydro power – systems installation, connection and maintenance planning
- Ambient energy – control and installation of systems





graham.co.uk



**John Graham Construction Ltd (GRAHAM)**

**Core Activities**  
Bridges, Highways, Marine, Nuclear, Energy, Rail, Water and Wastewater

**Year Established**  
1955

**Employee Number**  
250+

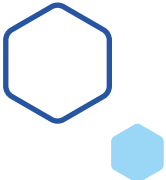
**Certifications**  
ISO 9001, ISO 14001, ISO 19650, ISO 27001, ISO 44001, ISO 45001

**Contact**  
Jonathan O’Connell  
E: jonathan.oconnell@graham.co.uk  
T: +44 (0) 7584 700 706  
W: www.graham.co.uk

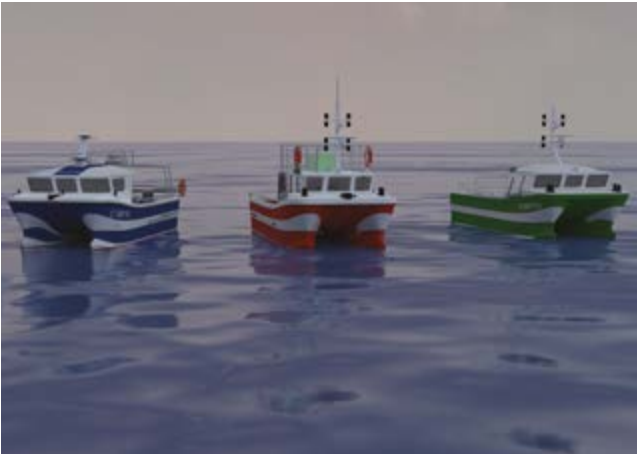
**Address**  
5 Ballygowan Rd  
Hillsborough  
BT26 6HX

We are specialists in the innovative resolution of complex civil engineering challenges. Across bridges and highways, rivers and railways, our deep rooted expertise transforms the rural and urban landscapes where we operate. Whether it is easing commuter congestion or powering renewable energy, we consistently strive to make a difference so that our work delivers lasting impact to millions of people throughout the UK and Ireland.

- Areas of expertise:**
- Built offshore facilities facilitating renewables market
  - Experience of working through the planning and consenting process
  - Relationships established with developers and understand their needs
  - We have been involved in ECI schemes providing budget and engineering support



gsmythboats.com



**G Smyth Boats**

**Core Activities**  
Manufacturing GRP fishing Vessels & Vessels, up to 15m

**Year Established**  
2009

**Employee Number**  
<50

**Contact**  
Gerald Smyth  
E: info@gsmythboats.com  
T: +44 (0) 28 4176 1010  
W: www.gsmythboats.com

**Address**  
57-59 The Harbour  
Kilkeel  
BT34 4AX

Established in 2009, G Smyth Boats currently design and manufacture boats for private and commercial fishermen based across the UK, Ireland and Europe and currently manufacture the vessels in Kilkeel. The vessels are primarily used for fishing and seaweed farming, with each vessel tailored to the specific requirements and needs of the customer. The company also manufacture commercial vessels for a number of functions.

- Areas of expertise:**
- Design and manufacture of fishing vessels & vessels
  - GRP moulding
  - Marine industry consultancy & expertise
  - Portfolio of established vessels to choose from
  - Skilled employees







harland-wolff.com



## Harland & Wolff

### Core Activities

Shipbuilding, ship repair, fabrication, full life service, offshore energy infrastructure

### Year Established

1861

### Employee Number

1,000+ across four UK sites

### Certifications

JOSCAR Registered, ISO 9001, ISO 14001, ISO 45001, ISO 3834, EN 1090-1

### Contact

Ben Murray  
E: ben.murray@harland-wolff.com  
T: +44 (0) 28 9045 8456  
W: www.harland-wolff.com

### Address

Queen's Island  
Belfast  
BT3 9EUA

Harland & Wolff designs, builds, refits, repairs and services vessels and structures for the global defence, energy, commercial and cruise and ferry industries. As part of Navantia UK, Harland & Wolff operates alongside facilities in Appledore (Devon), Methil (Fife) and Arnish (Western Isles).

Harland & Wolff's acquisition by Navantia UK in January 2025 has strengthened the company's position in maritime and offshore, particularly in the defence sector, whilst expanding capabilities in offshore renewable energy through Navantia's Seamounts division.

### Areas of expertise:

- Naval shipbuilding and prime contractor for the Fleet Solid Support (FSS) programme
- Offshore renewable energy infrastructure through Navantia Seamounts
- Substation fabrication and storage
- Vessel build and repair
- Ship maintenance and conversion
- Full component fabrication and storage within UK facilities



horizonengineering.co.uk



## Horizon Engineering Solutions Ltd

### Core Activities

Electrical and Safety Training, Facilities Management, Carbon Management

### Year Established

2015

### Employee Number

<50

### Certifications

ISO 9001:2015, ISO 14001:2015, ISO 45001:2018

### Contact

Tony Doherty  
E: tdoherty@horizonengineering.co.uk  
T: +44 (0) 7879 036 270  
W: www.horizonengineering.co.uk

### Address

Unit 11, Ravenhill Business Park  
Ravenhill Road  
Belfast  
BT6 8AW

Horizon Engineering Solutions Limited is the sole provider of HV and LV training in Northern Ireland. The Training School provides City & Guilds Accredited Training and is a mixture of academic and practical training. Horizon also provides facilities management and carbon management solutions to industry.

### Areas of expertise:

- HV & LV electrical training
- Facilities management
- Carbon management
- Electrical governance and management





**Inov8 Systems Ltd**

**Core Activities**  
Online oil in water analysers

**Year Established**  
2018

**Employee Number**  
<50

**Certifications**  
ISO 9001

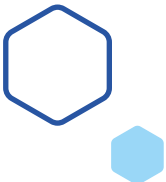
**Approvals**  
ATEX, IECEx, DNV, IMO, Class I Div I

**Contact**  
Russell Hempsey  
E: russell.hempsey@inov8s.com  
T: +44 (0) 7733 199 795  
W: www.inov8s.com

**Address**  
6 Edgewater Road Office Park  
Belfast  
BT3 9JQ

Inov8 Systems offers a series of ultra-modern online and handheld oil in water analysers. Using the latest technology and materials, combined with the highly skilled and experienced in house engineers, enables Inov8 equipment to remain robust and accurate even in the harshest environments.

- Areas of expertise:**
- Online oil in water analysers
  - Benchtop oil in water analysers
  - Oil content meters
  - TOG analysers



**Ionic Technologies International Ltd**

**Core Activities**  
Manufacturing of Rare Earth Oxides

**Year Established**  
2022

**Employee Number**  
<50

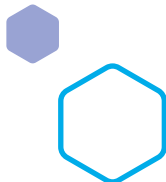
**Certifications**  
Currently working towards:  
ISO 9001:2015, ISO 14001:2015, ISO 45001:2018

**Contact**  
Kieran Long  
E: kieran.long@ionicttechnologies.com  
T: +44 (0) 7832 571 568  
W: www.ionicttechnologies.com

**Address**  
6 Heron Wharf  
Heron Road  
Belfast  
BT3 9LE

Ionic Technologies' recycling technology enables the manufacture of high specification magnets using recycled rare earths, with no loss of quality. Ionic Technologies will process both end of life magnets (waste) and swarf to recover, separate and refine high-purity magnet Rare-Earth Oxides (REOs) using our sustainable technology.

- Areas of expertise:**
- Magnet recycling
  - Hydrometallurgy
  - Solvent extraction
  - Technology scale-up
  - Rare earth analysis







getizon.com



**Izon Live Ltd**

**Core Activities**  
Asset Management, Turbine management, offshore Threat Management, Machine Learning, Performance analysis

**Year Established**  
2020

**Employee Number**  
<50

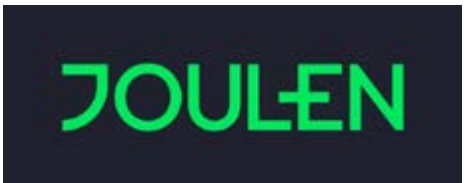
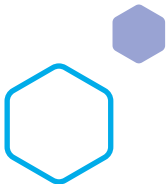
**Certifications**  
ISO 9001, ISO27001 (pending final audit)

**Contact**  
Stuart Lunn  
E: stuart.lunn@izon.live  
T: +44 (0) 7840 853 555  
W: www.getizon.com

**Address**  
37 Dargan Road  
Fortwilliam Business Park  
Belfast  
BT3 9LZ

Izon Live is a leading IoT software developer specialising in maritime and offshore activities including threat management, subsea cable protection, and monitoring of offshore wind installations. We operate worldwide providing advanced real time analytics and automation to maximize performance and minimize risks, customized to the unique requirements of individual stakeholders.

- Areas of expertise:**
- Asset management
  - Subsea cable protection software
  - Machine learning and predictive AI modules
  - Automated regulatory reporting and workflow engine
  - Custom software development for specific derived intelligences



joulen.com



**PowerOn Technologies Ltd  
t/a Joulen**

**Core Activities**  
Optimisation of battery storage and renewable electrical energy; Behind the Meter, Front of Meter, Commercial and Grid Scale using data analytics, machine learning and electricity grid & markets expertise

**Year Established**  
2017

**Employee Number**  
<50

**Contact**  
Eddie McGoldrick  
E: info@joulen.com  
T: +44 (0) 7789 746 990  
W: www.joulen.com

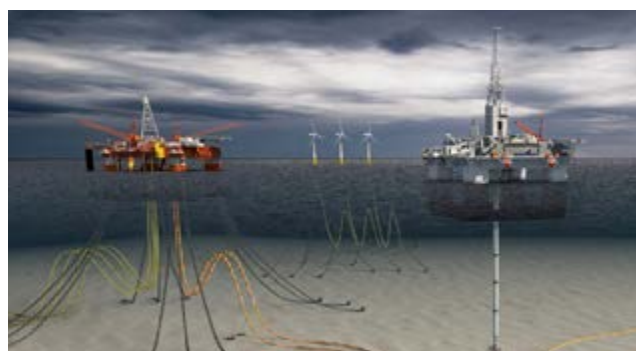
**Address**  
4th Floor  
19 Bedford Street  
Belfast  
BT2 7EJ

Joulen is a leader in applying smart technologies to renewable energy. It ensures every unit generated earns the maximum value. Its Predictive Analytical Renewables Integration System PARIS uses machine learning and advanced data analytics to maximise your grid connection value, your energy market price value and your grid services value.

- Areas of expertise:**
- Electricity grid connection design and project management
  - Electricity markets (IRL, GB and EU) – value stream access and optimisation
  - Optimisation of renewables; using battery storage, data analytics, machine learning on proprietary PARIS platform
  - Behind the meter; large scale residential, commercial and industrial
  - Front of meter; grid scale, hybrid (wind/solar) sites






[ka-engroup.com](http://ka-engroup.com)


## KA Engineering Group Ltd

### Year Established

2018

### Employee Number

<50

### Certifications

ISO 9001:2015, ISO 45001:2018, ISO 14001:2015

### Approvals

SafeContractor

### Contact

Kingsley Sunday

T : +44 (0) 7721 914 050

W: [www.ka-engroup.com](http://www.ka-engroup.com)

### Address

16 Upper Malvern Road  
Belfast  
BT8 6TF

KA Engineering Group are a highly qualified group of experienced engineering teams involved in structural designs by using industry standard software to build precise, bespoke models to replicate configurations found in the offshore/onshore and marine environments for renewable and wind turbine structures, marine structures, subsea risers and infrastructures.

### Areas of expertise:

- Marine and maritime consultancy: onshore and offshore wind turbine structural designs and integrity management
- Ports and harbour project design: marine structures design and analysis and project management
- Project design, construction and civil engineering: subsea riser designs, components, and mini platforms
- Wind turbine inspection, maintenance and repair: asset life extension, structural health monitoring and integrity management
- Advanced engineering, technology and process optimisation: compliance and safety of engineering designs and structures


[camlingroup.com/energy-kelvatek](http://camlingroup.com/energy-kelvatek)


## Kelvatek

### Core Activities

Transforming monitoring solutions for offshore wind farms and electricity networks

### Year Established

2008

### Employee Number

250+

### Certifications

Cert Quality ISO9001, Cert Cyber Essentials, Cert Health and Safety ISO45001, Cert Environmental ISO14001

### Approvals

Jessica Mack

### Contact

Jessica Jordan

E: [j.jordan@kelvatek.com](mailto:j.jordan@kelvatek.com)

T : +44 (0) 28 9262 6989

W: [www.camlingroup.com/kelvatek](http://www.camlingroup.com/kelvatek)

### Address

31 Ferguson Drive  
Lisburn  
BT28 2EX

Partnering with world-leading wind generation farms, energy utilities and data centre operators, Kelvatek provides industry-leading transformer monitoring solutions and services. We help operators of these facilities gain a deeper understanding of the risk, health, and performance of their transformer fleet through our secure, robust, and accurate online monitoring solution TOTUS.

### Areas of expertise:

- Holistic transformer monitoring
- Digital solutions
- Asset condition assessment
- Expert services





Kinsetsu Ltd

Core Activities

Internet of Things for maritime and defence to digitalise processes for efficiencies.

Kinsetsu's intelligent asset locating and tracing platforms automate tasks to reduce human error and time.

Real-time asset tracking – from vessels and shipyards to global destinations. Optimising service flow with seamless visual insight to your operations and assets, anywhere – right asset, right time, right location, and right condition. Delivering certainty when it matters.

Delivering instant asset location, count and readiness status, and automated movement capture between buildings and zones. It provides insight to dwell time, utilisation, and transit time, with automated notifications and alerts.

Innovative personnel accounting and locating for enhanced staff, sub-contractor, and visitor management. Association of person to vessel for work tracking or to unmanned spaces for lone-worker safety.

Process optimisation and efficiency – giving back time to you and your team by reducing administrative burden and overheads.

**Year Established**  
2016

**Employee Number**  
<50

**Certifications**  
Cyber Essential Plus, ISO 9001

**Approvals**  
Working with the Royal Navy and Tier 1 Defence Primes

**Contact**  
Jacqueline Crooks  
E: Jackie@kinsetsu.co.uk  
T: +44 (0) 7717 427 440  
W: www.kinsetsu.co.uk

**Address**  
Unit A4, Harbour Court  
5 Heron Road  
Belfast  
BT3 9HB

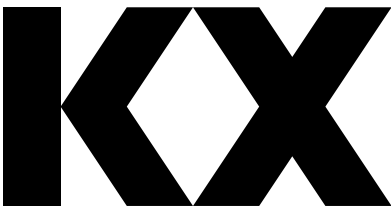
kinsetsu.co.uk



**Kinsetsu helps organisations maximise asset utilisation with real-time visualisation. Using sensors, we seamlessly locate, manage, and track physical assets on our platform ktrack®. Visualising assets through mapping and analytics significantly improves efficiency and service utilisation whilst lowering cost, risk and ensuring compliance in complex daily operations.**

Areas of expertise:

- Internet of Things for defence and maritime sectors
- Intelligent asset monitoring and tracing solutions
- Asset tracking – from vessels and shipyards to global destinations
- Personnel accounting and locating at shipyard and vessel
- Process optimisation and efficiency – releasing time to you and your team by reducing administrative burden



kx.com



KX

Core Activities

Real-time data processing and insights, Predictive analytics, Enhanced coordination across fleets and ports, Scalability and flexibility

**Year Established**  
1993

**Employee Number**  
250+

**Certifications**  
CyberEssentials, CyberEssentials+

**Approvals**  
KX adheres to the highest security and compliance standards for maritime applications, safeguarding sensitive operational data and ensuring confidentiality in mission-critical operations.

We have partnered with Lockheed Martin Skunkworks to utilise KX capabilities for innovation and competitive advantage in the provision of real-time, data-driven decision-making capabilities.

**Contact**  
Kevin Brien  
E: kbrien@kx.com  
T: +44 (0) 28 3025 2242  
W: kx.com

**Address**  
Brian Conlon House  
3 Canal Quay  
Newry  
Co. Down  
BT35 6BP

**KX provides high performance analytics integrating both live and historical data processing into one powerful solution to accelerate decision-making. With experience spanning Formula 1 to financial trading, we deliver data at unparalleled speed and performance.**

Areas of expertise:

- Unmatched speed, scale, and efficiency: KX has the fastest time series database globally allowing you to process information in the most demanding environments
- Versatile, enabling compact workloads: KX's tiny footprint supports edge use cases, including deployment on operational assets, with the flexibility to deploy on the cloud
- Complete data access: Our open system architecture and API ensure comprehensive data access, along with data sovereignty
- Advanced AI search: Search unstructured datasets alongside structured data in the same system whilst supporting machine learning workloads at scale
- Secure by design: Proven, resilient, and secure for air-gapped environments. KX has been a trusted system for mission-critical applications for over 20 years
- Rapid and adaptable development frameworks: Integrate with Python, SQL, ML, and AI frameworks to develop and deploy mission-critical apps in days and weeks
- Unparalleled time series data exploration: Rapidly query, analyse, and visualise large amounts of real-time and historical time series data, making it easier to uncover patterns, trends, and critical insights





laganenergyeng.com



## Lagan Energy Engineering

### Core Activities

HV Electrical Engineering for Onshore & Offshore Wind, Hydrogen & Battery Energy Storage

### Year Established

2014

### Employee Number

<50

### Certifications

ISO 9001, ISO 14001, OHSAS 18001

### Approvals

Energia, Tractebel, Hydrogen Ireland

### Contact

Emmet Lagan  
E: emmet.lagan@laganenergyeng.com  
T: +44 (0) 7741 251 510  
W: www.laganenergyeng.com

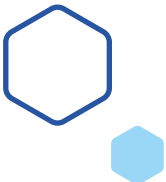
### Address

Unit 3B, Bankmore Business Park  
Omagh  
Co. Tyrone  
BT79 OBE

Lagan Energy Engineering provide quality assured electrical engineering, contracting and consultancy services to blue chip clients on various geographical locations across Ireland, the UK and mainland Europe. Specialising in full turnkey solutions up to and including 275KV in the renewables sector and other mission critical facilities including hydrogen electrolyser installs, offshore wind electrical engineering and large scale maritime & offshore decarbonisation projects.

### Areas of expertise:

- Hydrogen – feasibility studies, project design and installation of electrolyzers for green hydrogen production
- Onshore & offshore wind – installation, operations and maintenance, grid connection, energy efficiency and asset management
- Battery storage – installation, connection, maintenance and project design for large scale battery energy storage
- Decarbonisation of ports – installation of large scale renewable energy projects for ports



maddenmarine.com



## Madden Bros LTD T/A Madden Marine

### Core Activities

Marine interior outfitting, refurbishment works, maintenance works, upholstery and flooring

### Year Established

1989

### Employee Number

<50

### Certifications

ISO 9001:2015, ISO14001:2015

### Contact

Steven Fearon  
E: steven.fearon@maddenmarine.com  
T: +44 (0) 7467 942 893  
W: www.maddenmarine.com

### Address

Units 4 - 5 Grange Park  
Mallusk  
Belfast  
BT36 4LA

Madden Marine was founded in 1989 as a marine refurbishment company specialising in the international cruise ship and European ferry industry. Madden Marine delivers high quality, handcrafted luxury interiors. Its projects span the globe, including international cruise ships, passenger ferries and domestic cargo, amongst others.

### Areas of expertise:

- Project management services
- Design services
- Full turnkey contractor
- Manufacturing
- Upholstery and flooring







mclh.co.uk



## McLaughlin & Harvey Ltd

### Core Activities

Transforming monitoring solutions for offshore wind farms and electricity networks

### Year Established

1853

### Employee Number

<50

### Certifications

ISO 9001:2015 (Quality), ISO 14001:2015 (Environmental), ISO 45001:2018 (Health & Safety), ISO 50001:2011 (Energy), ISO 27001: 2013 (Information Security), bre BIM Level 2, CHAS, CHAS (Designer), CHAS (Principal Designer), Cyber Essentials Certificate, Cyber Essentials Plus Certificate, Civil Engineering Contractors Association Scotland, Healthy Working Lives (Gold), Investors in Young People (Silver), Institute of Leadership & Management (ILM), Member of the 5% Club (Gold), Mates in Mind Certificate, Professional Development Programme supported by a Graduate, Trainee & Apprenticeship Programme, Safecontractor Accreditation, Signatories of the Gangmasters & Labour Abuse Authority (GLAA)

### Approvals

Achilles Building Confidence, Achilles UVDB, British Safety Council Membership, CITB Be Fair accredited., Considerate Constructors Scheme Partner, Constructionline Gold Member

### Contact

Lee Davison  
E: civilprocurement@mclh.co.uk  
T: +44 (0) 7501 212 422  
W: www.mclh.co.uk

### Address

15 Trench Road  
Mallusk  
Newtownabbey  
BT36 4TY



**With 170 years of experience in the building and civil engineering industry, McLaughlin & Harvey are committed to delivering cost-effective solutions within a safe and secure working environment. Our Civil Engineering division specialises in offering design and construction services in diverse projects, including port developments, energy initiatives, and environmental enhancements.**

### Areas of expertise:

- Offer design and construct services across a range of disciplines including port and harbour developments, river and coastal engineering
- Deliver infrastructure and assets that benefit communities, encourage business growth and improve connections
- Provide construction and development services tailored to customer requirements across the renewable energy industry
- Considerable experience in the delivery of challenging maritime projects
- We have provided port facilities for over 3 million passengers and 70 million tonnes of freight



mcsherrycivilmarine.com



## McSherry Civil and Marine Ltd

### Core Activities

Offshore Wind, Marine Civil Engineering, Supply Chain and Workforce Development

### Year Established

2018

### Employee Number

<50

### Contact

Michael McSherry  
E: Michael@mcsherrycivilmarine.com  
T: +44 (0) 7557 221 645  
W: www.mcsherrycivilmarine.com

### Address

Greenan Road  
Banbridge  
Co. Down  
BT32 3NR



**McSherry Civil and Marine Limited was set up in 2018 to provide a range of services to the offshore wind, marine and civil engineering sectors. The principals have managed the delivery of a number of high profile projects within the UK, Ireland and mainland Europe. The company prides itself on developing bespoke solutions to deliver complex projects using experience and a key network of trusted suppliers and consultants.**

### Areas of expertise:

- Offshore wind and marine civil engineering project management
- Supply chain development
- Strategic workforce planning
- Vessel charter management
- Professional staff supply





[mjmmarine.com](http://mjmmarine.com)



## MJM Marine Ltd

### Core Activities

Marine Outfitting, Design, Contract Management, Logistics, Research & Development, Manufacturing, Antimicrobial Solutions, Carpet & Upholstery, New Builds, Refurbishment Works, In-Service Works

### Year Established

1982

### Employee Number

250+

### Certifications

ISO 9001 in Quality Management Systems, ISO 45001 in Occupational Health and Safety Management, Bronze Diversity Mark, Investors in People Gold

### Approvals

Holland America Line, P&O Cruises, Carnival, Norwegian Cruise Line, Princess, The Ritz-Carlton Yacht Collection, Virgin – Voyages, Regent Seven Seas Cruises, Cunard, TUI Cruises, Azamara, Silversea, Oceania Cruises, Celebrity Cruises, Star Cruises, Pullmantur Cruises, Marella Cruises, StenaLine, Royal Caribbean International

### Contact

Damien Morgan  
E: [damien.morgan@mjmmarine.com](mailto:damien.morgan@mjmmarine.com)  
T: +44 (0) 28 3025 8450  
W: [www.mjmmarine.com](http://www.mjmmarine.com)

### Address

Carnbane Business Park  
Newry  
BT35 6QH

MJM Marine has over 40 years of world-class marine outfitting experience. With in-house manufacturing facilities, MJM can offer clients a complete project management service with bespoke and turnkey outfitting and innovative solutions.

### Areas of expertise:

- Shipyard management
- Design services – in-house design teams use the latest 3D drawing packages which integrated flawlessly with CAD/CAM packages
- Specialist joinery
- Carpet fitting & floor solutions
- Furniture reupholstery & restoration



[moore-concrete.com](http://moore-concrete.com)



## Moore Concrete Products Ltd

### Core Activities

Providing the agricultural, building and civil sectors with quality precast concrete products

### Year Established

1978

### Employee Number

51-249

### Certifications

Investors In People Platinum, Constructionline Gold Member, ROSPA President's Award, RISQS, ISO 9001 Quality Management, ISO 45001 Occupational Health and Safety Management, ISO 14001 Environmental Management

### Approvals

Science Based Targets: Moore Concrete are 1 of only 4 UK-based precast concrete manufacturers who have set a Science Based Target.  
Environmental Product Declarations: We have published EPDs for a range of our products that are used to quantify environmental information on the lifecycle of a product.

### Contact

Thomas Cartwright  
E: [thomas.cartwright@moore-concrete.com](mailto:thomas.cartwright@moore-concrete.com)  
T: +44 (0) 28 2565 2566  
W: [www.moore-concrete.com](http://www.moore-concrete.com)

### Address

Caherty House  
41 Woodside Road  
Ballymena  
Co. Antrim  
BT42 4QH

Moore Concrete has provided the agricultural, building and civil sectors with quality precast products since its formation in 1978. It focuses heavily on innovation driven through discussions with its customers to continuously expand its product offering and take Moore Concrete to the forefront of the precast industry in the UK.

### Areas of expertise:

- Agriculture: Feed/water troughs, panels, bunker / L walls, above ground slurry store, slats, OxFence, livestock housing
- Building: Wall copings, pillar caps, sills, kerbs and dwarf walls, fence posts
- Civil: Road, rail, coastal, Redi-Rock (retaining walls), bespoke schemes







mottmac.com



### Mott MacDonald Ltd

#### Core Activities

Ports, ferry terminals, offshore and onshore renewable energy, buildings, infrastructure, low carbon infrastructure, ancillary services

#### Year Established

1976

#### Employee Number

250+

#### Certifications

ISO 9001: Quality Management, ISO 14001:2015 Environmental Management, ISO 45001 Occupational H&S Management, ISO 27001:2022 Information Security Management, Kitemark BIM Delivery phase ISO 19650 Framework, PAS 2080 Carbon Management Specification co-author

#### Contact

Derek Burnside  
E: derek.burnside@mottmac.com  
T: +44 (0) 28 9089 5860  
W: www.mottmac.com

#### Address

9th Floor, River House  
48-60 High Street  
Belfast  
BT1 2BE

Mott MacDonald is a global, employee-owned engineering, development and management consultancy. We plan, design, deliver and maintain the transport, energy, water, buildings and wider infrastructure that is integral to people's daily lives. We use our expertise for the benefit of our clients and the communities they serve.

We prepare, outline, tender, and detailed designs for port structures including: piers and jetties; quay walls; sea walls and breakwaters; long sea outfalls and cooling water intakes; slipways; dredging and reclamation; fendering and mooring systems.

We provide technical, environmental, social and management consulting services in relation to wind, hydropower, thermal and solar technologies.

#### Areas of expertise:

- Project & programme management
- Technical advisory
- Owner's engineer services
- Concept and detailed design
- Port facilities
- Condition inspection
- Remedial works design
- Contractor services
- Environmental and permitting services
- Masterplanning
- Carbon management
- Climate resilience
- Digital delivery



North Channel Wind

northchannelwind.com



### North Channel Wind Ltd

#### Core Activities

Offshore wind project development, provision of floating solutions to the offshore energy industry (design, engineering, procurement, construction, installation)

#### Year Established

2022

#### Employee Number

<50

#### Certifications

ISO 9001: Quality Management System, ISO 14001: Environmental Management System, OHSAS 18001: Occupational Health & Safety Management System, Class: Vessel Classification, ISM: International Safety Management. ISPS: International Ship & Port Facility Security Code

#### Contact

Melanie O'Driscoll  
E: melanie.odriscoll@northchannelwind.com  
T: +353 (0) 860 840 273  
W: www.northchannelwind.com

#### Address

Forsyth House  
Cromac Street  
Belfast  
BT2 8LA

North Channel Wind is a prospective offshore wind development in the North Channel of the Irish Sea using innovative floating wind turbine technology to generate clean, renewable electricity for Northern Ireland.

North Channel Wind is a wholly owned subsidiary of SBM Offshore, with front-end development work undertaken by NMK Renewables.

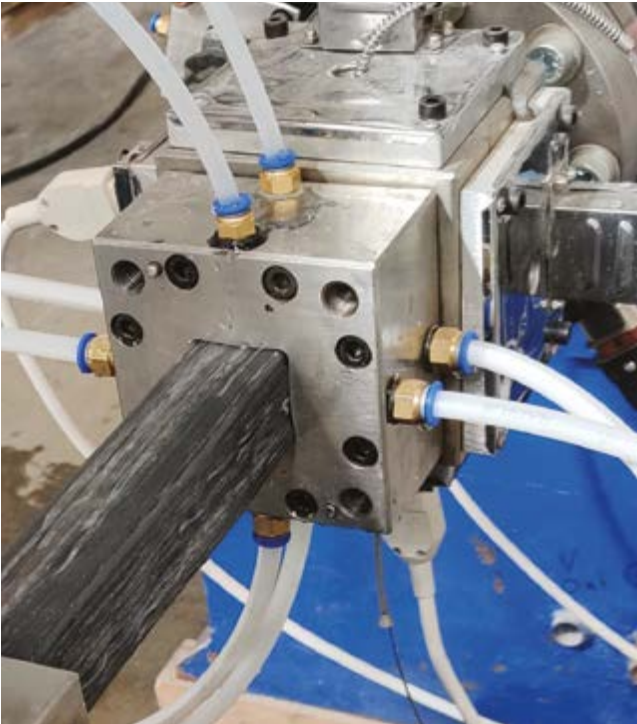
#### Areas of expertise:

- Provider of floating solutions to the offshore energy industry
- Project development (consenting, engineering, land acquisition, grid, stakeholder engagement)
- Full range of EPCI products (engineering, procurement, construction, installation)
- Floating offshore wind technology design, research and development
- Deep water energy specialist including Power to X





plaswire.com



Plaswire Ltd

Year Established  
2004

Employee Number  
<50

Certifications  
ISO9001, 14001, 45001. AS9100, SC21

Contact  
Andrew Billingsley  
E : andrew@plaswire.com  
T : +44 (0) 28 4063 0484  
W : www.plaswire.com

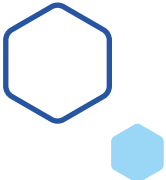
Address  
3 Halfpenny Valley Industrial Estate  
Lurgan  
BT66 8TP

Plaswire specialises in processing complex waste polymers destined for incineration and landfill. Our smart hybrid RX Polymer enables EoL wind blades to be re-purposed for construction products, replacing virgin plastics, precast concrete, wood and metal.

RX Polymer prevents up to 6 tonnes of CO2 for each tonne processed.

Areas of expertise:

- Re-purposing EoL wind turbine blades 100% at Plaswire site Northern Ireland
- Quayside blade fractional breakdown with single pass process and onward RX Polymer processing
- Decom yard blade fractional breakdown with single pass process and onward RX Polymer processing
- Design and build process plant for strategic solution worldwide
- Licensing RX Polymer technology



polysorbgroup.co.uk



Polysorb Group

Core Activities  
Cleaning contaminated surfaces hard, soft and liquid

Year Established  
1990

Employee Number  
<50

Certifications  
ISO 9001, 14001, 45001

Approvals  
Approved for spill cleanups with environment agencies in the UK and Ireland on sensitive habitat sites and wind farms. Provide recycling of liquids to aero industry and engineering manufacturing.

Contact  
Andrew Brines  
E : skane@ridgeway-online.com  
T : +44 (0) 28 2827 7900  
W : www.polysorbgroup.co.uk

Address  
30 Uppertown Road  
Gleno  
Larne  
BT40 3EA

Polysorb Group has established itself as a distinctive and innovative player in the field of environmental cleanup, with their focus on using micro-organisms to remediate oil pollution. Polysorb Group's use of microbes to tackle petroleum hydrocarbon pollution is both environmentally friendly and effective. They have demonstrated a consistent ability to adapt their microbial solutions to various environments, from wind farms in isolated regions to active construction sites and private dwellings. Their method shows a mean reduction in contamination of 94.3%, proving its effectiveness.

Areas of expertise:

- Clean up of oil pollution – use of microbes/ micro-organisms for the clean up of oil pollution
- Bioremediation - transforming harmful pollutants into non-toxic substances like water and carbon dioxide
- Decontamination of wind farm environments
- Clean up of petroleum hydrocarbon pollution







redbayboats.com



Redbay Boats Ltd

**Core Activities**  
Manufacturer of the world renowned range of Stormforce RIB boats

**Year Established**  
1977

**Employee Number**  
<50

**Certifications**  
ISO 9001:2000, HpiVS certified

**Approvals**  
RCD approved, DoM and MCA commercial work boat approvals, Hulls constructed to comply with Lloyds special Service Craft rules.

**Contact**  
Tom McLaughlin  
E: info@redbayboats.com  
T: +44 (0) 28 2177 1331  
W: www.redbayboats.com

**Address**  
1 Gortacree Road  
Cushendall  
Co. Antrim  
BT44 0TE

Redbay Boats has been building commercial RIB boats for police, coast guard, fishery protection, offshore and small ferry operators from their base in County Antrim since 1991. The company has built a reputation both locally and internationally for delivering tough no nonsense workboats to operators who 'must go to sea'. The current range extends from 6 to 16.5 metres and are available with multiple propulsion system options in both open boat and enclosed wheelhouse formats.

Areas of expertise:

- Redbay Boats offer industry leading range of commercial RIB boats
- Redbay Boats specialise in building customised craft to meet the client's exact needs
- Redbay Boats build to comply with the latest MCA, DOM and international standards
- Redbay Boats operate a 20,000 sqft state of the art boat building and repair facility
- Redbay Boats are renowned for providing service and backup to customers onsite wherever that may be in the world



ridgeway-online.com  
rockbags.com



Ridgeway Plant Co Ltd  
TA "Ridgeway"

**Core Activities**  
Specialist Supply Chain to construction, engineering and offshore sectors

**Year Established**  
1969

**Employee Number**  
51-249

**Certifications**  
ISO 9001: Quality - 2000, ISO 45001: Health & Safety - 2014, ISO 14001: Environmental - 2014

**Contact**  
Stephen Kane  
E: skane@ridgeway-online.com  
T: +44 (0) 7712 935 390  
W: www.ridgeway-online.com  
www.rockbags.com

**Address**  
103 Airport Road West  
Belfast  
BT3 9ED

Ridgeway are a long established supply chain company to the construction and engineering industries across Ireland, the UK and Europe.

Ridgeway specialise in promoting niche "added value" products and services to the offshore wind and energy sectors with the Kyowa Filter Unit "Rockbag®" a credible alternative to traditional methods such as rock armour and concrete mattress solutions used subsea for many decades. Rockbags are a widely recognised and utilised solution for scour and cable protection to subsea assets around energy protects offshore and also infrastructure projects around inland waterways, bridges, rivers and port development.

Areas of expertise:

- Infrastructure scour protection for rivers and sea defence
- Subsea cable, pipeline and asset protection
- Pre-assembly works and site safety & infrastructure product supply
- Product manufacture, product kitting and sub-assembly pre installation
- Pre project design for subsea and civil works





rpsgroup.com



## RPS - a Tetra Tech Company

### Core Activities

Engineering, planning and environmental consultancy

### Year Established

1966

### Employee Number

250+

### Certifications

ISO 45001:2018, ISO 9001:2015, ISO 14001:2015

### Contact

Mark McConnell  
E: mark.mcconnell@rps.tetrattech.com  
T: +44 (0) 7775 670 899  
W: www.rpsgroup.com

### Address

Elmwood House  
74 Boucher Road  
Belfast  
BT12 6RZ

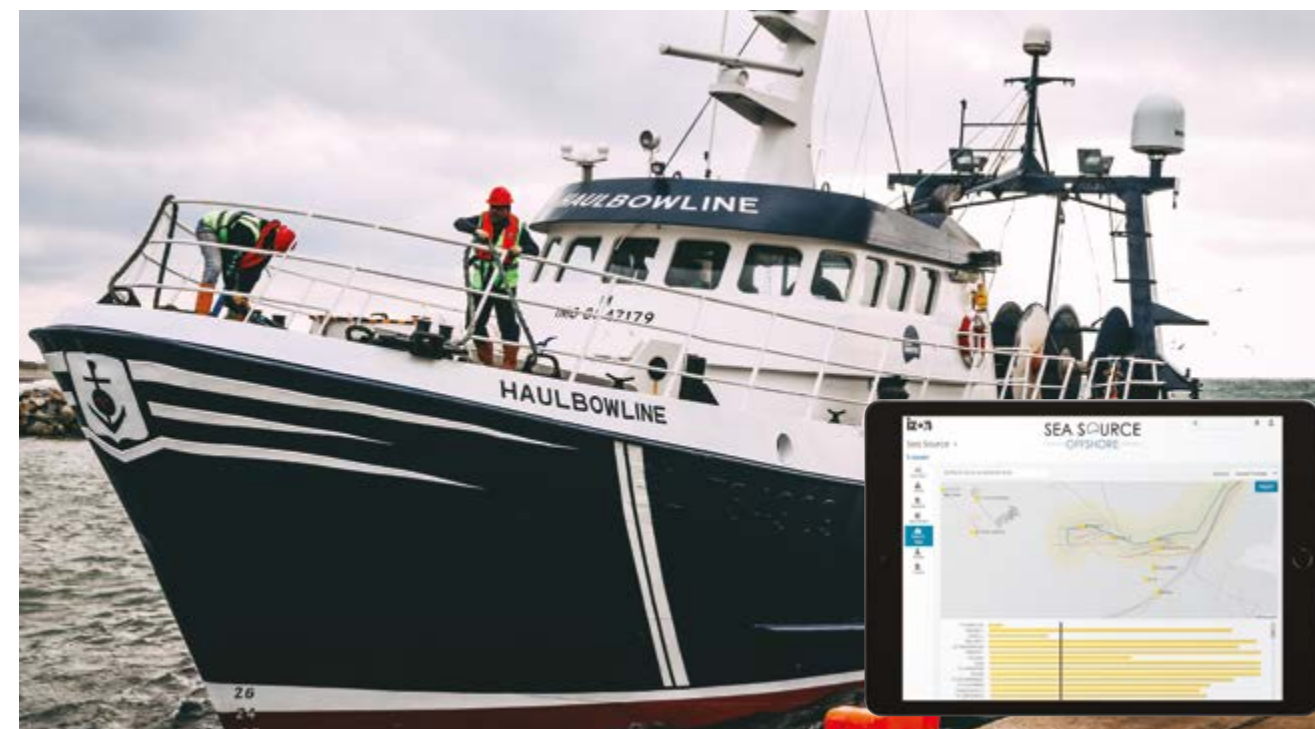
Tetra Tech is a global provider of consulting and engineering services. We define, design and manage projects creating shared value in a complex, resource-scarce world. Our engineers, scientists and planners provide expertise and design innovative solutions for a range of sectors including ports, harbours and offshore energy.

### Areas of expertise:

- Port and harbour design and consultancy through all stages of development, from concept to construction
- Planning and environmental services including marine baseline surveys for benthic, metocean, fisheries, marine mammals and birds
- Geotechnical investigation and transport consultancy
- Offshore energy advisory
- Offshore surveys and Unexploded Ordnance (UXO) Consultancy to assess and mitigate risk to ALARP



seasource.com/offshore-about



## Sea Source Offshore Ltd

### Core Activities

Provide Guard and Survey Vessels, Live Asset Monitoring and Reporting, Asset Protection, Marine Traffic Surveys and Onshore/Offshore Liaison officers

### Year Established

2011

### Employee Number

<50

### Certifications

ISO 9001, ISO 14001, OHSAS 18001, IMCA Members, MCA Document of Compliance

### Contact

David Hill  
E: davey@seasource.com  
T: +44 (0) 7709 423 506  
W: www.seasource.com

### Address

The Harbour  
Kilkeel  
Newry  
BT34 4AX

Sea Source Offshore Ltd is a unique marine services provider and offshore asset management expert, powered by a collective of experienced and knowledgeable fishermen with a deep understanding of the marine environment. Sea Source Offshore are leaders in safety, reliability, expertise and customer satisfaction, providing world-class services to offshore energy developers, cable layers, and interconnector planners.

### Areas of expertise:

- Vessel charters
- Live asset monitoring
- Offshore/onshore liaison
- Guard and survey vessels
- Remote asset monitoring







simplybluegroup.com



## Simply Blue Group (Simply Blue Energy (NI) Holdings Ltd)

### Core Activities

Offshore wind, sustainable fuels, marine energy, carbon dioxide removal and low-impact aquaculture

### Year Established

2011

### Employee Number

51-100

### Contact

Sam McCloskey  
E: sam.mccloskey@simplybluegroup.com  
T: +44 (0) 7890 033 458  
W: www.simplybluegroup.com

### Address

Doyle Shipping,  
101 Airport Road West  
Belfast  
BT3 9ED

Simply Blue Group, headquartered in Cork, Ireland, is a leading renewable energy developer with a focus on replacing fossil fuels with clean energy. It develops pioneering renewable energy projects both offshore and onshore wind, sustainable fuels, and low-impact aquaculture – all in harmony with the oceans and the land. The company has a global pipeline of 10GW of floating offshore wind projects and 4GW of fixed bottom wind.

Simply Blue Group is committed to creating new local economic opportunities and developing projects that co-exist with local communities.

With an experienced and passionate team, Simply Blue Group has offices in Cork, Dublin, Belfast, Newquay, Pembrokeshire, Edinburgh, Bilbao and Nova Scotia.

### Areas of expertise:

- Offshore wind
- Sustainable fuels
- Low impact aquaculture
- Wave energy
- Carbon dioxide removal



skylarkcontrol.com



## Skylark

### Core Activities

Software Development, Sales, Customer Service

### Year Established

2018

### Employee Number

<50

### Certifications

ISO 27001:2013

### Approvals

Board of Directors

### Contact

David McMullan  
E: dmmullan@skylarkcontrol.com  
T: +44 (0) 7825 549 38  
W: www.skylarkcontrol.com

### Address

Ecos Centre, Kernohans Lane  
Broughshane Road  
Ballymena  
BT43 7QA

Skylark is a digital operational control software platform that enables owners and operators of wind farms to track and manage workers more safely and effectively. Site-based personnel use our mobile app to complete inductions, check on and off site, receive work orders, greatly reducing the administrative burden on operational control rooms.

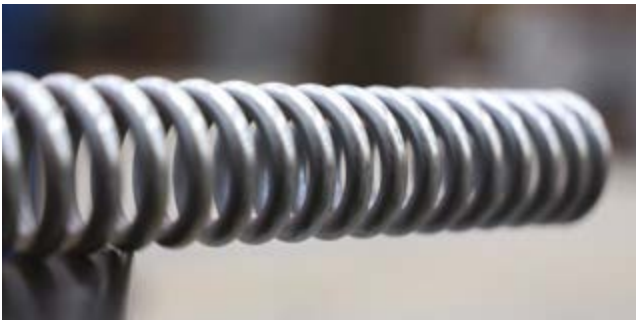
### Areas of expertise:

- Automated operation control software platform
- Development of current system to meet customer's specifications
- Manage, plan and schedule work orders from platform to field mobile app
- Maximises health and safety compliance
- Manage operational staff and site worker's training and inductions





springco.co.uk



## Springco (NI) Ltd

### Core Activities

Springco manufacture and supply compression, tension, torsion, flat springs, wire forms as well as a wide range of miscellaneous springs in exotic metals specialising in nickel and cobalt alloys. Our wide customer base includes aerospace and space, offshore and sub-sea industries, medical, defense, valve manufacturing, renewable, power and nuclear sectors plus general engineering.

### Year Established

1954

### Employee Number

<50

### Certifications

ISO9001, AS9100D, SC21 Silver

### Contact

Kieron Kent  
E: kieron.kent@springco.co.uk  
W: www.springco.co.uk

### Address

21 Carn Road  
Carn Industrial Estate  
Portadown  
BT63 5WG

Springco was established in 1954. We have nearly 60 years experience in supplying specialist spring solutions, Springco can design and manufacture all types of springs for almost any application.

### Areas of expertise:

- Coiled springs, compression, tension, torsion (round/square/rect sections)
- Wire forms
- Pocket spring (wire)
- Flat springs (flat strip/sheet)
- Flat profile parts/shims
- Spring hardware sourcing and supply
- Tool springs (die springs)
- CNC turning centre and in-house milling
- Specialist raw material stock held
- Cobalt and nickel specialists
- Spring design service
- Tube forms manufactured (round/square/rect sections)
- Baggage bar manufacture (bent bars)
- Drilling, boring, bending, deburring
- General machining and re-work facilities



survitecgroup.com



## Survitec Group Ltd

### Core Activities

Manufacturing, Service and Distribution, Design Development and Qualification, and Training

### Year Established

1852

### Employee Number

250+

### Certifications

AS9100 Rev D, ISO 9001:2015, ISO 14001:2015

### Approvals

FAA, EASA, CAA, USCG, MED SOLAS, DAOS

### Contact

Andrew Reavy  
E: andrew.reavy@survitecgroup.com  
T: +44 (0) 7825 567 622  
W: www.survitecgroup.com

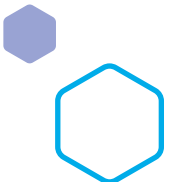
### Address

Kingsway  
Dunmurry  
Belfast  
BT17 9AF

Survitec, a global Survival Technology leader to maritime, defence & government, aerospace and energy sectors with over 3,000 employees, 11 manufacturing facilities and 400+ service centres. Operating in 2,000+ ports, spanning 96 countries and the world's largest manufacturer and supplier of liferaft, Marine Evacuation Systems (MES) and offshore rental PPE.

### Areas of expertise:

- World's largest Survival Technology solutions provider
- Centre of Excellence for design and development of marine rafts and evacuation systems
- Complete product assembly, testing and qualification
- Supply a diverse customer base including shipyards, aircraft manufacturers, global defence, service stations and cruise lines
- Global footprint with 3,000 people working across 96 countries who exist to protect lives





# TATHAM & Co

MARITIME SOLICITORS

tathamlaw.com



## Tatham & Co

### Core Activities

Specialist shipping, offshore, commercial, marine insurance and aviation lawyers

### Year Established

2012

### Employee Number

<50

### Certifications

Law Society Awards, 'Small Law Firm of the Year', 2021

### Approvals

We are the approved solicitors for a number of P&I clubs, H&M underwriters, ship owners, operators and managers, charterers, commodity traders, oil majors, brokers and shipyards.

### Contact

Joanne Moody  
E: joanne.moody@tathamlaw.com  
T: +44 (0) 7513 725 828  
W: tathamlaw.com

### Address

20 St Dunstan's Hill  
City of London  
EC3R 8HL

Tatham & Co is a growing law firm with decades of experience in the maritime and offshore sectors with solicitors based in London, Northern Ireland and Greece. The firm provides high-quality advice with a view to solving disputes quickly, effectively, and with a commercial focus.

### Areas of expertise:

- Shipbuilding: act for both owners and yards for cargo and passenger vessels, specialist offshore units and superyachts
- Offshore sector and support vessels: represent clients in offshore infrastructure projects, windfarm maintenance, tug and tow
- Casualty work and emergency response: collisions, explosions, risk management and reputational management
- Carriage of goods by sea, freight-forwarding, and haulage
- Contract drafting and negotiation

# THE DELUXE GROUP

thedeluxegroup.com



## The Deluxe Group

### Core Activities

Design, fabrication & installation of bespoke interiors

### Year Established

1969

### Employee Number

51-249

### Certifications

ISO 9001:2015, ISO 14001:2015, ISO 45001: 2018, FSC Chain of Custody

### Contact

Richard Hill  
E: richard.hill@thedeluxegroup.com  
T: +44 (0) 28 3833 0468  
W: www.thedeluxegroup.com

### Address

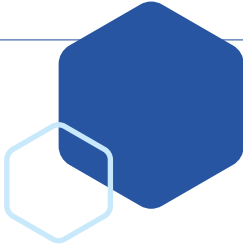
1 Mahon Industrial Estate  
Portadown  
Co. Armagh  
BT62 3EH

The Deluxe Group is a leading design and fabrication contractor specialising in building authentic, story-led interiors in the marine, entertainment, luxury hospitality, prime residential and workplace sectors. Delivering projects worldwide, we work with international clients and globally recognisable brands who have a vision to create interiors that provide unforgettable experiences.

### Areas of expertise:

- In-house design team
- Advanced manufacturing
- Fabrication of bespoke joinery, fibreglass, glass reinforced gypsum, metals & specialist finishes
- Pre-fabrication to minimise installation time on site
- Full turn-key service for interiors





[nimaritime.com/torch-energy-consulting-ni](http://nimaritime.com/torch-energy-consulting-ni)



**Torch Energy Consulting NI**

**Core Activities**

Offshore wind: Project support, marine coordination, marine contractor business unit support

**Year Established**

2023

**Employee Number**

<50

**Contact**

Sorchia Millen  
E: [sorchatorchenergy@gmail.com](mailto:sorchatorchenergy@gmail.com)  
T: +44 (0) 7725 951 512  
W: [nimaritime.com/torch-energy-consulting-ni](http://nimaritime.com/torch-energy-consulting-ni)

**Address**

140 Lisburn Road  
Belfast  
BT9 6AJ

Torch Energy Consulting NI offers comprehensive services to the offshore wind industry. Led by Sorchia Millen, who has extensive experience in various roles within the industry since 2013, the consultancy specialises in fixed foundations, cable transport and installation (T&I), and repair projects. Project locations span the East Irish Sea, North Sea (UK, Scotland, and European waters), Baltic Sea, and the English Channel. Committed to advancing the future skills of the offshore wind sector, Torch Energy Consulting NI also provides Offshore Wind Seminars and guest lectures.

**Areas of expertise:**

- Offshore wind project support: In both the preparation and execution phases
- Offshore wind marine coordination: Specialised coordination of marine operations for offshore wind projects
- Supply chain support: For the offshore wind supply chain and related industries
- Standardisation leadership: Leading standardisation efforts, mentoring, and developing skills matrices
- Offshore wind seminars and guest lectures: Providing educational seminars and guest lectures on offshore wind



[totalbatchingsolutions.com](http://totalbatchingsolutions.com)



**Total Batching Solutions Ltd**

**Core Activities**

Manufacturing

**Year Established**

2014

**Employee Number**

<50

**Certifications**

ISO 9001:2015, ISO 14001:2015, ISO 45001:2018

**Contact**

David Carlisle  
E: [david.carlisle@totalbatchingsolutions.com](mailto:david.carlisle@totalbatchingsolutions.com)  
T: +44 (0) 7920 271 346  
W: [www.totalbatchingsolutions.com](http://www.totalbatchingsolutions.com)

**Address**

28 Cabragh Road  
Co. Armagh  
BT61 8EY

Total Batching Solutions manufacture fixed and ultra mobile concrete batching plants for the flexible production of concrete within a port location. Our low carbon plant can produce large volumes of concrete on-site for quayside extensions, offshore wind production facilities and fixed or floating concrete sub-structures.

**Areas of expertise:**

- Manufacture of ultra mobile concrete batching plants for portside development, fixed and floating offshore substructures
- Manufacture of high-capacity static concrete batching plants for portside development, fixed and floating offshore substructures
- Concrete batching plants for slipform production
- Stockyard and concrete production flow analysis
- Land and ship to shore materials handling solutions for aggregate and cement storage & production







ventusenergy.com



**Ventus Energy Ltd**

**Core Activities**  
HV Electrical Engineering Company

**Year Established**  
2021

**Employee Number**  
51-249

**Certifications**  
UKAS ISOs 9001 Quality, 14001 Environmental & 45001 Health & Safety, Achilles Silver + UVDB and UNCE, Cyber Essentials

**Contact**  
Rauri Maguire  
E: rauri.maguire@ventusenergy.com  
T: +44 (0) 7458 116 858  
W: www.ventusenergy.com

**Address**  
5th Floor Suite 2 The Cai Building Coble Dene  
Royal Quays  
North Shields  
NE29 6DE

Ventus Energy is a high voltage services company with a core emphasis on supplying the offshore wind market with a high value offering, focused on helping reduce costly network downtime through a combination of pre-emptive and re-active services.

- Areas of expertise:**
- Cable jointing
  - Fault finding & repair
  - 24/7 control centre services
  - Operations & maintenance
  - Asset management



vigiltech.ai



**Vigiltech Energy Ltd**

**Core Activities**  
Operational intelligence solutions for energy and maritime sectors, focusing on data standardisation, predictive insights, and automation

**Year Established**  
2024

**Employee Number**  
<50

**Contact**  
Callum Curry  
E: callum@vigiltech.ai  
T: +44 (0) 7789 280 733  
W: vigiltech.ai

**Address**  
30 Llewellyn Avenue  
Lisburn  
BT27 4AG

Vigiltech Energy Limited provides advanced operational intelligence systems to optimise energy and maritime operations.

- Areas of expertise:**
- Data standardisation and integration for energy systems
  - Predictive maintenance and operational insights
  - Compliance automation for maritime operations
  - AI-driven decision support tools
  - Energy efficiency and emissions monitoring





Inkd.in/HJ8SJV



Wilson Marine Management Ltd

**Core Activities**  
Marine and ports consultancy

**Year Established**  
2024

**Employee Number**  
<50

**Certifications**  
BSc (Hons) – Maritime Studies, Qualified Deck Officer (OOW), Advanced Diploma in Counselling

**Contact**  
Stuart Wilson  
E: stuart@wilson-marine.co.uk  
T: +44 (0) 7887 010 015  
W: Inkd.in/HJ8SJV

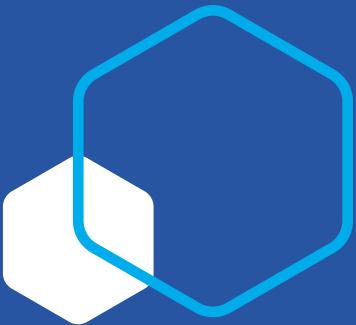
**Address**  
7 Dunamoy Road  
Ballyclare  
Co. Antrim  
BT39 0SZ

WMML provides support and consultancy services to those affiliated with and working within the marine industry, with particular emphasis and experience in the ferry, ports, marine fuels and Maritime Power-to-X sectors.

We aim to provide flexible solutions to support business, whether to assist development, undertake projects or solve problems.

Areas of expertise:

- Marine Consultancy: marine expertise on offshore projects
- Port Consultancy: liaison with ports on marine safety and commercial projects
- Marine fuels: advice and support on all types of fuel including e-fuels
- Loss prevention and risk mitigation: HAZID risk assessments, accident investigation
- Project Management and co-ordination





# Capability Matrix

A&L GOODBODY	ARTEMIS TECHNOLOGIES	BARTON INDUSTRIAL SERVICES	CASC	CATAGEN	CAUSEWAY GEO	CCP GRANSDEN	CIMPINA	CLARKSONS PORT SERVICES	CONTINU	COPIUS GROUP	INSERT COMPANY NAME	CUNNINGHAM COVERS	DECOMENGINEERING	Company Name
	⬢		⬢			⬢	⬢			⬢	⬢		⬢	Advanced Engineering, Technology and Process Optimisation
									⬢					Asset Management, Monitoring & Protection
														Automated Regulatory Reporting
			⬢	⬢					⬢	⬢				Carbon Capture, synthetic fuels and Energy Storage
				⬢										Green Hydrogen Production and Distribution
												⬢		Wind Turbine Transition Piece and Cable Reel Covers
				⬢										Carbon Management & Consultancy
			⬢				⬢			⬢				Heavy Steel Engineering and Coded Welding
														Concrete Production and Mobile Batching Plants
								⬢						Recycling of Critical Minerals, Magnets and Turbine Blades
	⬢			⬢					⬢					Software Developent, Digital Twin, AI and Cyber Security
								⬢						Customs Experts
			⬢						⬢	⬢				Electrical Design, Installation and Grid Connection
		⬢												Health and Safety, Survival Equipment and Fall Protection Systems
					⬢									Geo Technical Investigations and Ground Modelling
														Guard & Survey Vessel Charterer & Management
														HV & LV Electrical Training
					⬢			⬢					⬢	Marine and Maritime Consultancy
	⬢					⬢	⬢							Marine & Naval Design and Vessel Manufacture, Repair and Fit Out
					⬢									Jack Up Vessel Owner Operator
														Decontamination, Oil Spill Clean Up and Water Analysis
														Marine Traffic Surveys & Offshore Liaison
														Offshore Wind Developer Fixed & Floating
						⬢					⬢			Polymer Technology
			⬢			⬢				⬢				Ports & Harbour Project Design
			⬢							⬢				Project Design, Construction and Civil,Engineering
			⬢					⬢		⬢				Project Logistics, Transport and Site Management
								⬢						Ships Agency,Stevedoring and Warehousing
														Environmental Protection and Solvent Extraction
														Subsea Cable and Scour Protection Systems
														Substation Fabrication
			⬢				⬢			⬢				Pre Assembly & Infrastrurcture Product Supply
		⬢	⬢			⬢				⬢			⬢	Wind Turbine Inspection, Maintenance & Repair
														Dedicated Martime Law & Legal Advice
⬢														Corporate, Litigation, Finance, Real Estate, Employment Legal Experts
														Ocean Freight
														Hub Management



Company Name	DECOM ENGINEERING	DE ROMEIN NEARSHORE	DHL (UK)	DIVER LTD	DOYLE SHIPPING GROUP	DR MARITIME ASSETS LTD	EHS INTERNATIONAL	ELECSYS	EVERUN	FIORDSTRONG	FM ENVIRONMENTAL LIMITED	GAVIN & DOHERTY	GE GRID	GES GROUP
Advanced Engineering, Technology and Process Optimisation	🔷			🔷									🔷	
Asset Management, Monitoring & Protection						🔷		🔷	🔷	🔷			🔷	🔷
Automated Regulatory Reporting								🔷	🔷					
Carbon Capture, synthetic fuels and Energy Storage							🔷		🔷	🔷				🔷
Green Hydrogen Production and Distribution														
Wind Turbine Transition Piece and Cable Reel Covers														
Carbon Management & Consultancy							🔷			🔷				
Heavy Steel Engineering and Coded Welding														
Concrete Production and Mobile Batching Plants														
Recycling of Critical Minerals, Magnets and Turbine Blades														
Software Developent, Digital Twin, AI and Cyber Security				🔷				🔷	🔷	🔷			🔷	
Customs Experts					🔷									
Electrical Design, Installation and Grid Connection									🔷				🔷	🔷
Health and Safety, Survival Equipment and Fall Protection Systems							🔷		🔷					
Geo Technical Investigations and Ground Modelling												🔷		
Guard & Survey Vessel Charterer & Management		🔷				🔷								
HV & LV Electrical Training														
Marine and Maritime Consultancy	🔷	🔷		🔷		🔷	🔷			🔷		🔷		
Marine & Naval Design and Vessel Manufacture, Repair and Fit Out						🔷	🔷							
Jack Up Vessel Owner Operator		🔷												
Decontamination, Oil Spill Clean Up and Water Analysis														
Marine Traffic Surveys & Offshore Liaison						🔷								
Offshore Wind Developer Fixed & Floating														
Polymer Technology														
Ports & Harbour Project Design												🔷		
Project Design, Construction and Civil,Engineering		🔷		🔷							🔷			
Project Logistics, Transport and Site Management			🔷	🔷	🔷								🔷	
Ships Agency,Stevedoring and Warehousing					🔷									
Environmental Protection and Solvent Extraction										🔷	🔷			
Subsea Cable and Scour Protection Systems		🔷								🔷		🔷		
Substation Fabrication													🔷	
Pre Assembly & Infrastrurcture Product Supply					🔷									
Wind Turbine inspection, Maintenance & Repair	🔷								🔷					🔷
Dedicated Martime Law & Legal Advice														
Corporate, Litigation, Finance, Real Estate, Employment Legal Experts														
Ocean Freight			🔷											
Hub Management			🔷		🔷									

GRAHAM CONSTRUCTION	G SMYTH BOATS	HARLAND & WOLFF	HORIZON ENGINEERING SOLUTIONS	INOV8 SYSTEMS	IONIC TECHNOLOGIES	IZON LIVE LIMITED	JOULEN	KA ENGINEERING	KELVATEK	KINSETSU	KX	LAGAN ENERGY ENGINEERING	MADDEN MARINE	Company Name
🔷		🔷		🔷	🔷			🔷	🔷	🔷				Advanced Engineering, Technology and Process Optimisation
🔷						🔷	🔷		🔷	🔷	🔷	🔷		Asset Management, Monitoring & Protection
						🔷				🔷	🔷			Automated Regulatory Reporting
							🔷					🔷		Carbon Capture, synthetic fuels and Energy Storage
												🔷		Green Hydrogen Production and Distribution
														Wind Turbine Transition Piece and Cable Reel Covers
			🔷											Carbon Management & Consultancy
		🔷												Heavy Steel Engineering and Coded Welding
														Concrete Production and Mobile Batching Plants
					🔷									Recycling of Critical Minerals, Magnets and Turbine Blades
🔷						🔷	🔷		🔷	🔷	🔷			Software Developent, Digital Twin, AI and Cyber Security
														Customs Experts
🔷			🔷				🔷					🔷		Electrical Design, Installation and Grid Connection
														Health and Safety, Survival Equipment and Fall Protection Systems
														Geo Technical Investigations and Ground Modelling
														Guard & Survey Vessel Charterer & Management
			🔷											HV & LV Electrical Training
	🔷							🔷						Marine and Maritime Consultancy
	🔷	🔷											🔷	Marine & Naval Design and Vessel Manufacture, Repair and Fit Out
														Jack Up Vessel Owner Operator
				🔷										Decontamination, Oil Spill Clean Up and Water Analysis
														Marine Traffic Surveys & Offshore Liaison
														Offshore Wind Developer Fixed & Floating
														Polymer Technology
								🔷						Ports & Harbour Project Design
								🔷						Project Design, Construction and Civil,Engineering
													🔷	Project Logistics, Transport and Site Management
														Ships Agency,Stevedoring and Warehousing
					🔷									Environmental Protection and Solvent Extraction
														Subsea Cable and Scour Protection Systems
🔷		🔷												Substation Fabrication
		🔷												Pre Assembly & Infrastrurcture Product Supply
								🔷				🔷		Wind Turbine inspection, Maintenance & Repair
														Dedicated Martime Law & Legal Advice
											🔷			Corporate, Litigation, Finance, Real Estate, Employment Legal Experts
														Ocean Freight
														Hub Management



Company Name	MCLAUGHLIN & HARVEY	MCSHERRY CIVIL MARINE	MIM MARINE	MOORE CONCRETE	MOTT MACDONALD LTD	NORTH CHANNEL WIND/SBM	PLASWIRE	POLYSORB	RED BAY BOATS	RIDGEWAY ROCKBAGS	RPS, A TETRA TECH COMPANY	SEA SOURCE OFFSHORE	SIMPLY BLUE	SKYLARK
Advanced Engineering, Technology and Process Optimisation	🔴					🔴	🔴			🔴				
Asset Management, Monitoring & Protection											🔴	🔴		🔴
Automated Regulatory Reporting												🔴		🔴
Carbon Capture, synthetic fuels and Energy Storage					🔴									
Green Hydrogen Production and Distribution														
Wind Turbine Transition Piece and Cable Reel Covers														
Carbon Management & Consultancy					🔴						🔴		🔴	
Heavy Steel Engineering and Coded Welding														
Concrete Production and Mobile Batching Plants				🔴										
Recycling of Critical Minerals, Magnets and Turbine Blades						🔴								
Software Developent, Digital Twin, AI and Cyber Security											🔴			🔴
Customs Experts														
Electrical Design, Installation and Grid Connection														
Health and Safety, Survival Equipment and Fall Protection Systems									🔴					
Geo Technical Investigations and Ground Modelling		🔴			🔴						🔴		🔴	
Guard & Survey Vessel Charterer & Management												🔴		
HV & LV Electrical Training														
Marine and Maritime Consultancy		🔴			🔴						🔴	🔴	🔴	
Marine & Naval Design and Vessel Manufacture, Repair and Fit Out			🔴						🔴					
Jack Up Vessel Owner Operator														
Decontamination, Oil Spill Clean Up and Water Analysis								🔴			🔴			
Marine Traffic Surveys & Offshore Liaison												🔴		
Offshore Wind Developer Fixed & Floating						🔴							🔴	
Polymer Technology							🔴	🔴						
Ports & Harbour Project Design	🔴			🔴	🔴						🔴			
Project Design, Construction and Civil,Engineering	🔴	🔴							🔴	🔴				
Project Logistics, Transport and Site Management		🔴	🔴								🔴			
Ships Agency,Stevedoring and Warehousing														
Environmental Protection and Solvent Extraction								🔴		🔴				
Subsea Cable and Scour Protection Systems									🔴					
Substation Fabrication														
Pre Assembly & Infrastrurcture Product Supply									🔴					
Wind Turbine inspection, Maintenance & Repair														
Dedicated Martime Law & Legal Advice														
Corporate, Litigation, Finance, Real Estate, Employment Legal Experts														
Ocean Freight														
Hub Management														

Company Name	SPRINGCO	SURVITEC	TATHAM & CO	THE DELUXE GROUP	TORCH ENERGY CONSULTING	TOTAL BATCHING SOLUTIONS	VENTUS ENERGY	VIGILTECH ENERGY LIMITED	WILSON MARINE MANAGEMENT LTD
Advanced Engineering, Technology and Process Optimisation	🔴	🔴						🔴	
Asset Management, Monitoring & Protection							🔴	🔴	
Automated Regulatory Reporting								🔴	
Carbon Capture, synthetic fuels and Energy Storage									
Green Hydrogen Production and Distribution									
Wind Turbine Transition Piece and Cable Reel Covers									
Carbon Management & Consultancy								🔴	
Heavy Steel Engineering and Coded Welding									
Concrete Production and Mobile Batching Plants					🔴				
Recycling of Critical Minerals, Magnets and Turbine Blades									
Software Developent, Digital Twin, AI and Cyber Security								🔴	
Customs Experts									
Electrical Design, Installation and Grid Connection							🔴		
Health and Safety, Survival Equipment and Fall Protection Systems	🔴								
Geo Technical Investigations and Ground Modelling									
Guard & Survey Vessel Charterer & Management								🔴	
HV & LV Electrical Training							🔴		
Marine and Maritime Consultancy				🔴				🔴	
Marine & Naval Design and Vessel Manufacture, Repair and Fit Out			🔴						
Jack Up Vessel Owner Operator									
Decontamination, Oil Spill Clean Up and Water Analysis									
Marine Traffic Surveys & Offshore Liaison								🔴	
Offshore Wind Developer Fixed & Floating									
Polymer Technology									
Ports & Harbour Project Design					🔴			🔴	
Project Design, Construction and Civil,Engineering	🔴								
Project Logistics, Transport and Site Management			🔴						
Ships Agency,Stevedoring and Warehousing									
Environmental Protection and Solvent Extraction								🔴	
Subsea Cable and Scour Protection Systems									
Substation Fabrication									
Pre Assembly & Infrastrurcture Product Supply									
Wind Turbine inspection, Maintenance & Repair							🔴		
Dedicated Martime Law & Legal Advice		🔴						🔴	
Corporate, Litigation, Finance, Real Estate, Employment Legal Experts									
Ocean Freight									
Hub Management									







