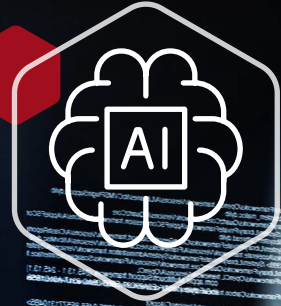


# Artificial Intelligence and Data Analytics in Northern Ireland



# Artificial Intelligence and Data Analytics in Northern Ireland

**As Artificial intelligence (AI) and Data analytics have emerged as pivotal drivers of technical innovation and economic growth globally, Northern Ireland has become a hub for research and innovation in both areas.**

The region is already renowned for its academic excellence and dynamic Tech scene. Our academic institutions, Queen's University Belfast and Ulster University, are leaders in the research and application of machine learning, deep learning, cognitive analytics, predictive analytics, natural language processing, brain-computer interface (BCI) and bio-inspired AI.

The universities also collaborate closely with industry partners. They drive innovative applications in Healthcare, Manufacturing, Finance, Agriculture, Public services, Cyber security and beyond. And this collaborative approach ensures the region remains a catalyst for breakthrough innovation.

Companies here are leveraging AI and Data analytics to create transformative solutions in a wide range of sectors. Healthcare start-ups are using AI to create diagnostic tools and personalised treatment plans, while financial firms are using advanced analytics to improve fraud detection and risk management.

The region is also driving progress in AI-driven cyber security solutions, addressing the critical need for robust digital security. These innovations highlight Northern Ireland's ability to tackle complex challenges with advanced technology.

**Northern Ireland is an ideal location for companies aiming to innovate and scale, due to its supportive business ecosystem, which includes access to funding, mentorship and collaborative opportunities with leading universities.**

We also have a highly skilled workforce, competitive operating costs and significant government investment in digital infrastructure and initiatives like City Deals. This makes Northern Ireland an ideal strategic location to do business.

## Did you know?



### Expertise:

- The Tech industry in Northern Ireland employs over 38,000 people in technology roles.
- Local company STATSports is a global leader in GPS sports performance analysis. With more than 1,000 elite customers across the world, STATSports technology is used by world-renowned sports organisations including Liverpool Football Club, Paris Saint-Germain, Juventus, the New York Yankees, the LA Dodgers and Washington Commanders.



### Research Excellence:

- Queen's University Belfast and Ulster University conduct wide-ranging multidisciplinary research in AI and Data analytics, with particular strengths in Core data science, Cyber security, Internet of things, Hardware, Robotics, Multimedia analytics, Economy and Medicine.
- Queen's University Belfast and Ulster University have produced successful spinouts, including Adoreboard, Analytics Engines, Dactacts, Intelesens (acquired by Renew Health), Titan IC (acquired by Nvidia), Sonrai Analytics, Cumulus Neuroscience, Heartsine Technologies (now owned by Stryker Corporation), Almac Diagnostics, Axial3D, Eventmap and Kainos.



### Recognition:

- Northern Ireland is the #1 international investment location for US Cyber security firms (fDi Markets FT, 2023).
- Belfast is Europe's leading FDI destination for new Software development (fDi Markets FT, 2023).
- Belfast is the world's top city for Fintech inward investment, while Northern Ireland is the #2 global region. (fDi Markets FT 2023)



# AI and Data Analytics

## Capabilities and Expertise

### Digital Transformation

**Northern Ireland's expertise in Software development and engineering provides significant digital transformation capabilities.**

Our companies leverage advanced skills in coding, data analytics and cloud computing, which drive innovation and enable seamless digital integration across industries, enhancing efficiency, competitiveness and the customer experience in the global market.

Kainos is one of Northern Ireland's leading IT companies. It employs more than 3,000 people in 23 countries across Europe, India and the Americas.

Kainos has announced it will invest £10 million in the advancement and scaling of Generative AI and is partnering with Ulster University's AI Research Centre. Together, they will undertake innovative and challenging fundamental and applied research to achieve international standard and knowledge advancement in the field of AI.

### Cyber Security

Northern Ireland is a global Cyber security hub, with innovative firms delivering expertise globally on persistent threats to national security, government, health, automotive, critical infrastructure, capital markets, legal, e-commerce, e-learning and child safety online.

**The region's cyber security ecosystem, with its exceptional talent pool, pioneering research and vibrant industry collaboration, has positioned Northern Ireland as the top international investment location for US cyber security firms.**

Global cyber security firm Rapid7 has launched a new security research partnership with the Centre for Secure Information Technologies (CSIT) at Queen's University Belfast. This collaboration uses AI and advanced machine learning techniques to detect risks and active threats with cloud environments, and it is one of the major projects at the Cyber AI Technology Hub.

### Financial Services and Fintech

Northern Ireland companies use AI and advanced data analytics to improve data quality, data personalisation and help companies use new sources of data as a competitive advantage in global financial services.

Northern Ireland company, KX, delivers cutting-edge Data analytics solutions that provide unparalleled speed and efficiency. It has developed a powerful vector database, KDB.AI, that lets clients build scalable, reliable AI applications using real-time data. It enables the building of Generative AI applications with advanced search, recommendation and personalisation capabilities.

### Life and Health Sciences

Northern Ireland has emerged as a leader in precision diagnostics by blending advanced research and AI with medical technology. It has used AI programmes to enhance diagnostics, treatment protocol development, drug development, personalised medicine, and patient monitoring and care.

Sonrai Analytics, an AI precision medicine company, works with Candel to develop multi-modal biological immunotherapies. Using Sonrai's AI Technology platform, 'Sonrai Discovery', it makes it possible to interrogate and share multi-omics data, helping researchers at Candel advance the development of cancer therapeutics.

### Agriculture

Northern Ireland companies are developing AI and data analytics tools for the agriculture industry, focusing on precision farming, real-time crop monitoring, livestock management and predictive analytics, boosting efficiency and sustainability in the agricultural sector.

CattleEye, an 'AI first' company, has harnessed advanced AI in video analytics to deliver the world's first hardware-independent autonomous livestock monitoring platform. It uses a low-cost security camera to capture video footage and provide insights into farm herds' health and productivity.



## Education and Research

Queen's University Belfast and Ulster University contribute to our talent pipeline by offering renowned degrees in AI, Data science and Data analytics.



### Specialist degrees include:

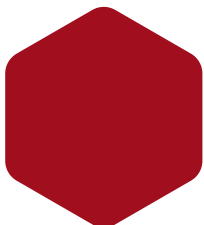
BSc Computer Science with Artificial Intelligence,  
BSc Mathematics and Data Science,  
BSc Data Science,  
MSc Artificial Intelligence,  
MSc Data Analytics,  
Postgraduate Diploma in Artificial Intelligence.

### Assured Skills Programme

The Assured Skills Programme is an innovative, pre-employment training programme. Using a partnership model, it delivers academies tailored to individual company needs. Microsoft, Deloitte, PwC, Kainos, KPMG, FD Technologies and others have made extensive use of the programme to train candidates in leading-edge Data analytics, Data science and AI.

**The Assured Skills Programme makes an important contribution to the supply of skills in Northern Ireland and complements the work of both local universities by developing skills for the knowledge economy.**

The programme has a very high success rate in securing talent for companies in a wide range of roles, such as Cyber security, Data analytics, Software engineering, Software testing, AI, Internet of Things and Financial services.



## Industry-Focused Research

**Northern Ireland has gained a global reputation for strong and collaborative research and innovation. This environment is driven by our universities and also lets investors and businesses access specialist Centres of Excellence that conduct research into AI and Data analytics.**

### Artificial Intelligence Research Centre (AIRC)

AIRC serves as the heart of AI research at Ulster University. Its focus is on both fundamental research to advance knowledge and applied research to develop innovative solutions. It aims to develop cutting-edge AI theories, algorithms and tools, and to create state of the art AI solutions for practical problems by engaging with stakeholders and users, as well as aligning with university, local, national and European initiatives. Two of the major industry-focused research projects under AIRC are:

**BT Ireland Innovation Centre (BTIIC)** – The establishment of the £29m BT Ireland Innovation Centre (BTIIC), which was launched in 2017 as a partnership with Ulster University, demonstrates the university's strengths in application-oriented AI and Data analytics. It has a focus on advanced R&D in core technology areas related to future telecommunication networks and services, including Data analytics, Internet of Things (IoT), Cyber security, Fixed and mobile network services and new products and service development.

**Kainos/AIRC Collaboration** – Kainos is partnering with AIRC to undertake innovative fundamental and applied research to achieve international standard and knowledge advancement in the AI field.

### Cognitive Analytics Research Laboratory (CARL)

Ulster University has significant research expertise in Data analytics, both in terms of machine learning algorithms and the application of analytical techniques across a diverse range of domains.

Ulster University's Cognitive Analytics Research Laboratory (CARL) is a cutting-edge cognitive analytics research centre bringing together businesses, government and advanced research expertise. It focuses on the application of cognitive research in areas such as Health, Fintech, Advanced Manufacturing, Media and Energy.

### PwC Advanced Engineering Research Centre (ARC)

ARC is PwC UK's £40m innovation centre, in collaboration with Queen's University and Ulster University, which launched in June 2021 with the strategic goal of building technology solutions in key areas of RPA (Robotics Process Automation), workflow automation, AI, data and analytics.

### School of Electronics, Electrical Engineering and Computer Science (EEECS)

AI constitutes a core disciplinary activity and a central focus of work at the School of Electronics, Electrical Engineering and Computer Science (EEECS), which is located within the Faculty of Engineering and Physical Sciences at Queen's University Belfast.

#### AI Research Theme

Within the AI Theme, there is extensive expertise in machine learning and deep learning, natural language processing, computer vision, knowledge engineering, planning and scheduling, AI ethics, and computer systems for AI. Applications are being used in Health, Fintech, Media and Education.

**There is a growing body of work on Discovery AI, which is a combination of AI techniques to facilitate discovery research, including causality discovery, model discovery and hypothesis generation.**

### The Institute of Electronics, Communications and Information Technology (ECIT)

The Institute of Electronics, Communications and Information Technology (ECIT) is a global institute located at Queen's University Belfast. It is host to two centres that perform AI research: the Centre for Secure Information Technology (CSIT) and the Centre for Data Science and Scalable Computing (DSSC).



## The Centre for Secure Information Technologies (CSIT)

The Centre for Secure Information Technologies (CSIT) is a global flagship centre for Cyber security research and education. CSIT is the UK's National Innovation and Knowledge Centre (IKC) for secure information technologies and its mission is to couple major research breakthroughs in the field of secure information technologies with a unique model of innovation and commercialisation to drive economic and societal impact.

This is reflected in its collaborations with world-leading companies including Rolls Royce, Seagate, BAE Systems, FD Technologies, Ebay and Thales. CSIT is also certified by the UK's National Cyber Security Centre (NCSC), a part of GCHQ, as an Academic Centre of Excellence in Cyber Security Research and Education.

A major theme running through all of CSIT's research is the application of AI to security and its focus is on leading-edge research that can translate rapidly into market-relevant, market-ready products and services for sectors from Finance to Defence.

CSIT announced the creation of a new 'Cyber-AI Hub' as part of an £18.9m investment package from the UK government for the region's Cyber security sector. The hub is a consortium of eight R&D intensive cyber security companies who want to invest in AI-based security technologies to drive growth in their companies and benefit the Northern Ireland economy.

## Centre for Data Science and Scalable Computing (DSSC)

The Centre for Data Science and Scalable Computing (DSSC) at ECIT is investigating advancements in AI and the computational challenges relevant to 'big data' phenomena.

DSSC is working to deliver AI at scale, helping to break through current limitations in Medicine, Agrifood, Sustainability and Commerce. The centre works with global industry partners to help shape and direct its research agenda.

DSSC has world-leading expertise spread across two research areas. Firstly, the Scalable Computing area, which performs research in high-performance computing systems software, hardware and applications. And secondly, the Data Science area, specialising in data engineering, knowledge representation, AI and machine learning.

## Centre for Intelligent Autonomous Manufacturing Systems (i-AMS)

The Centre for Intelligent Autonomous Manufacturing Systems (i-AMS) is a Pioneer Research Programme within EEECS that conducts interdisciplinary research on AI applications in advanced manufacturing. It collaborates with regional industry partners in areas such as process monitoring, control and optimisation, time series prediction and in-line sensor characterisation.



## Industry Enablers

Northern Ireland's AI growth is fuelled by key industry enablers, including cutting-edge research institutions, supportive government policies and a collaborative, industry-focused ecosystem.

### The Artificial Intelligence Collaboration Centre (AICC)

The Artificial Intelligence Collaboration Centre (AICC) is a £16m project led by Ulster University in partnership with Queen's University, which supports technology diffusion to industry and training. It is designed to support industries that might otherwise be slow to adopt AI, including Manufacturing, Legal, Life sciences, and Creative technologies.

AICC will have bases in Belfast and Derry~Londonderry and play a crucial role in building a vibrant and successful AI ecosystem in Northern Ireland by fostering collaboration between researchers, businesses and government agencies. It will offer training, upskilling programmes and internships in AI for professionals and students, including 400 post-graduate AI/Data places and will attract talent to this area.

### Smart Manufacturing Data Hub

The Smart Manufacturing Data Hub (SMDH) supports small and medium-sized manufacturers to become more competitive by harnessing the power of data.

Digital solutions, expert guidance and funding are available to companies through the hub, allowing them to explore and evaluate their processes, make operational savings, de-risk investments and become more digitally savvy.

The new hub and testbed are led by Ulster University and backed by £50m of government funding and business co-investment. The funding is part of the £300m Made Smarter Innovation Challenge, designed to support the development and increased use of new and existing industrial digital technologies, such as AI and virtual reality.

### Digital Catapult NI

Digital Catapult NI works with a range of organisations – including start-ups, scale-ups, established businesses, investors, government, public sector, research and academia – to discover new ways of solving industry challenges, increase productivity and explore new markets. It offers innovation expertise, deep technology subject matter knowledge and consortium-led programmes. It also supports companies to accelerate the adoption of emerging technologies for commercial benefit.

### The Hartree Centre for Digital Innovation

The Hartree Centre's Northern Ireland hub forms part of the Hartree National Centre for Digital Innovation (HNCDI) programme. This programme helps businesses and organisations adopt supercomputing, data science and AI technologies for better productivity, smarter innovation and economic growth. The centre is home to some of the most advanced digital technologies and experts in the UK.





## Future

### Investment

**The government is committed to developing and advancing AI and Data analytics in Northern Ireland. It will invest £1.3 billion through City and Growth Deals, with several focused on research and application of AI and Data analytics across various sectors.**

These investments provide opportunities for businesses, both in and outside Northern Ireland, to tap into the world-leading expertise of our universities and develop breakthrough technologies, products and services. They will also strengthen the infrastructure that lets these products be tested, trialled and de-risked.

**City and Growth Deals represent an excellent investment opportunity for international businesses and offer international research institutions huge opportunities for research and collaboration.**

#### Momentum One Zero

Momentum One Zero is an innovation centre in digital technologies applying cyber security, wireless connectivity, AI, machine learning and scalable computing approaches to address local, national and global challenges relevant to 'big data' phenomena.

#### Cogitative Analytics Research Laboratory (CARL)

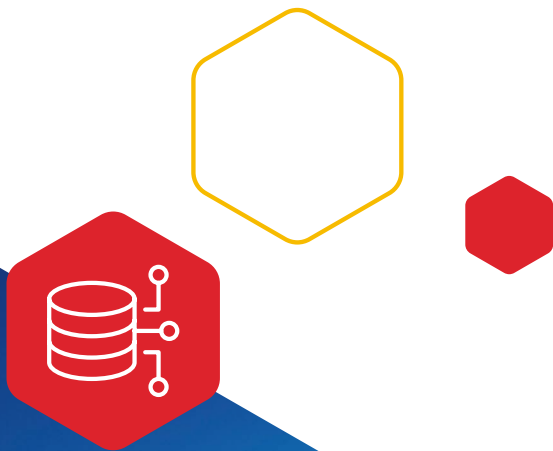
CARL, based at Ulster University, is a cutting-edge research centre which focuses on the application of Cognitive Research in Health, Fintech, Advanced manufacturing, Media and Energy among other areas. Home to a high-performance computing facility, servers, labs and offices, CARL is a place where companies can work in close collaboration with academic researchers.

#### Centre for Industrial Digitalisation, Robotics and Automation (CIDRA)

CIDRA at Ulster University will be an advanced support facility for local and international industry. This state-of-the-art facility will be a dedicated demonstration space for robotics, automation and AI, and an experimentation and skills development industry hub.

#### Centre for Digital Healthcare Technology (CDHT)

CDHT will be an exemplary centre for digital technology (including AI and IoT) and associated living labs in the areas of cardiology, diabetes, respiratory and stroke. CDHT will provide the forum for academia, industry and clinicians to come together to lead on research focused on many of the world's key health challenges, including rising healthcare costs and healthy ageing. Funding for CDHT is circa £42.9m and it is supported by world-leading companies such as Dell, Microsoft and BT.



## Some of Northern Ireland's

# AI and Data Analytics Innovators

### Adoreboard

Adoreboard uses emotional AI to improve customer and employee experiences for better business outcomes. Businesses like Amazon, Allstate and P&G use Adoreboard's SaaS platform to predict their next best action.

[adoreboard.com](https://adoreboard.com)

### Almac Diagnostic Services

Almac Diagnostic Services is a precision medicine company specialising in biomarker driven clinical trials. Offering a range of solutions to global pharma and biotech companies from genomic services to clinical biomarker & CDx development and clinical testing.

**With clinical and research laboratories in Europe and the USA, alongside strategic partnerships in China, Almac is enabling the support of global studies.**

A dedicated Data Sciences team also provides clinical trial support and proprietary biomarker solutions such as claraT – a unique reporting solution for cancer researchers looking at gene expression data. Innovative software like this helps Almac's global biopharma clients conduct novel analysis of their RNA data.

[almacgroup.com/diagnostics](https://almacgroup.com/diagnostics)

### Ampliphae

Ampliphae's award-winning cyber-security products protect enterprise information across the network and into Cloud applications. The AI-enabled Encryption Intelligence copilot discovers and assesses encryption risk, allowing customers to address weak security and plan for implementation of post-quantum encryption at scale.

[ampliphae.com](https://ampliphae.com)

### Analytics Engines

Analytics Engines help organisations unlock value from their data through personalised AI solutions tailored to business needs. Elevate your AI journey with Panoramic AI, and a suite of modules for:

- Operational Intelligence: Real-time insights and optimized operations.
- Process Automation: Boost productivity by automating tasks.
- Knowledge Discovery: Derive deep insights from diverse data.
- Supercharging Legacy Systems: Modernize without disruption.
- AI Strategy: Custom roadmaps for AI success.

Transform operations, enhance customer experiences, and drive innovation with Panoramic AI.

[analyticsengines.com](https://analyticsengines.com)

### ANGOKA

ANGOKA protects critical machine-to-machine communication with a zero trust network, based on unique, tamper-proof, hardware-rooted machine identities and a dynamic symmetric key exchange. Devices are able to communicate securely, even over untrusted networks, in a quantum resilient network. The company offers firmware, embedded and retro-fit solutions.

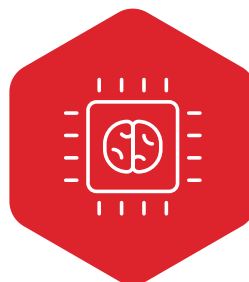
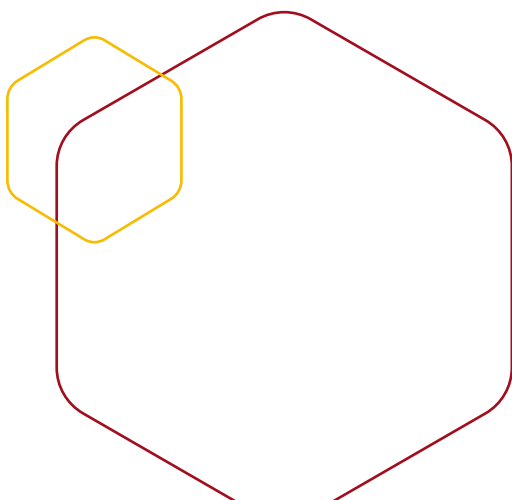
[angoka.io](https://angoka.io)

### BT

The BT Ireland Innovation Centre (BTIIC) in Belfast is an internationally-recognised global centre for excellence in research, innovation and development and is a collaboration between BT Technology's Applied Research and IT departments and Ulster University.

The research, which focuses on application-oriented AI and data analytics in core technology areas related to future telecommunication networks and services, provides better data analytics for customer experience and improved network quality and security, not only in Belfast, but globally.

[business.bt.com/public-sector/regions/northern-ireland/](https://business.bt.com/public-sector/regions/northern-ireland/)



## B-Secur

B-Secur, a global leader in advanced biosensing technology, leverages AI-powered electrocardiogram (ECG) solutions to enhance cardiac care and drive growth for partners in the health and wellness markets. With decades of R&D in ECG analysis and front-end design, B-Secur is at the forefront of innovation in noise and artefact detection, delivering clinical-grade ECG data for faster, more confident diagnoses and improved patient outcomes.

The company's FDA-cleared HeartKey® software technology powers on-device and cloud applications, enabling seamless integration into medical and consumer devices and platforms, accelerating time to market, and elevating preventative healthcare.

[b-secur.com](http://b-secur.com)

## Camlin

Camlin primarily applies AI and machine learning to optimising critical infrastructure, specifically focusing on energy and rail networks. It aims to increase safety, efficiency, resilience and sustainability within these systems. The company's products and services use AI to analyse data from sensors and smart devices within networks to identify patterns and risks. This helps predict equipment failure in areas including predictive maintenance, fault detection and management, network optimisation and data-driven insights.

[camlingroup.com](http://camlingroup.com)

## CattleEye

CattleEye, an 'AI first' company, has harnessed advanced AI in video analytics to deliver the world's first hardware-independent autonomous livestock monitoring platform. It uses a low-cost security camera to capture video footage and provide insights into farm herds' health and productivity.

The company has also developed its CattleEye Insights App, which lets farmers monitor their cows' health and performance in real-time. It provides a dashboard that tracks and visualises a number of key metrics at both the herd and cow levels. The app, which is a cross-platform dashboard accessible on smartphones, tablets or PCs, allows filtering of data in a number of ways to find the exact subset of cows that require monitoring.

[cattleeye.com](http://cattleeye.com)

## Cumulus Neuroscience

Cumulus Neuroscience is a world-leading medical AI technology company that has developed NeuLogiq® – a first-in-class medical grade, flexible data collection and analytics platform that can be used at-home or in the clinic to solve some of the biggest challenges in monitoring brain function and brain disorders.

In clinical trials, this integrated physiological and digital biomarker platform provides the critical data and insights needed to accelerate the delivery of more effective CNS drugs to patients. This addresses the significant unmet need for faster, more robust, and cost-effective execution and evaluation of clinical trials in neuroscience.

[cumulusneuro.com](http://cumulusneuro.com)

## Data Intellect

Data Intellect (previously AquaQ Analytics) is a technology company specialising in data management and data analytics services for the Capital markets and other sectors. It provides both on-premises and cloud-based solutions, helping clients unlock the power of their data to make better decisions. Services include data management, data analytics, data science, KDB+ solutions and software engineering. While headquartered in Belfast, Data Intellect has a global presence with offices in London, New York, Singapore, and Hong Kong.

[dataintellect.com](http://dataintellect.com)



CattleEye

## Datactics

Datactics provides a cloud-ready software platform specialising in data quality and matching. Its software is data agnostic with most international users operating in banking and government.

Clients typically have very large volumes of structured and unstructured information which they want to measure, normalise, cleanse and de-duplicate.

Datactics integrates seamlessly with a client's data operations pipeline and governance tools (MDM, catalogue and lineage).

The software is used to provide clean model-ready data into a range of AI and machine learning applications as well as predictive analytics.

Additionally, data governance staff use the platform to report on metrics relating to the completeness, accuracy and timeliness of data as it is required for regulatory reporting, business reporting or migration.

[datactics.com](https://datactics.com)

## Deloitte

Deloitte is a global professional services network that provides audit, consulting, financial advisory, risk advisory, tax and legal services to a broad range of clients, from corporations to governmental agencies. Deloitte also offers tech-focused services, such as Digital transformation, Robotics, Artificial Intelligence, cyber risk management and cloud migration.

In 2022, Deloitte acquired Belfast firm Etain, one of the UK and Ireland's leading data and digital transformation specialists. The acquisition created Northern Ireland's largest AI and data practice. It doubled the headcount of Deloitte's AI and data solutions practice in Belfast and grew its consulting practice to a team of more than 900 people in Belfast. Overall, Deloitte's Belfast practice employs more than 1,100 people and approximately 4,000 people across the island of Ireland.

[deloitte.com/uk/en/what-we-do/regions/northern-ireland.html](https://deloitte.com/uk/en/what-we-do/regions/northern-ireland.html)

## Diaceutics

Diaceutics Plc, established and grown from Belfast, has a global presence and customer base. Working with 17 of the top 20 Pharma companies, Diaceutics enables the development and commercialisation of Personalised Medicine treatments. Using its unique combination of access to the world's largest repository of healthcare data, a global network of laboratories, and its first to market DXRX™ Diagnostic Platform, the company uses AI technology to help find the right patients for the right medicine, creating opportunities for treatment pathways.

[diaceutics.com](https://diaceutics.com)

## Enzai

Enzai was formed by a team of leading lawyers and engineers concerned about the risks that computational models could pose to society at large. Enzai provides an AI governance and risk management platform that allows organisations to adopt policies around how they build and deploy AI and measure their practices against them.

[enz.ai](https://enz.ai)

## Kainos

Across Kainos' global customer base including UK government, Kainos has led on the responsible adoption of AI. With deep expertise of AI and software engineering Kainos has enabled organisations to leverage AI for commercial and positive humanitarian impact, improving lives, driving efficiency and fuelling revenue growth.

Kainos emphasize user impact, enabling users to enhance customer experiences and trust through AI-powered personalization and smarter services. This approach ensures that AI adoption is both responsible and translates into measurable business and user value.

[kainos.com](https://kainos.com)

## KX Systems

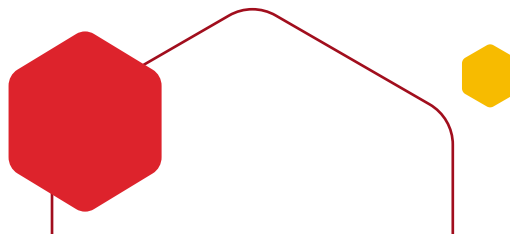
KX Systems offers a unique and powerful set of tools that cater to the growing demand for real-time, contextual AI solutions.

**Central to KX's technology is the KDB time series database and analytics engine, a streaming analytics platform that drives business decisions with real-time continuous intelligence.**

Its innovations are deployed in industries as diverse as Financial services, Healthcare, Semiconductors, Manufacturing, Automotive (including Formula 1), Energy, Utilities and Telecommunications.

KX has developed a powerful vector database, KDB. AI, that allows clients to build scalable, reliable AI applications using real-time data. It enables the building of generative AI applications with advanced search, recommendation, and personalisation capabilities.

[kx.com/products/kdb-ai](https://kx.com/products/kdb-ai)



## Ocula Technologies

Ocula Technologies helps firms optimise their e-commerce customer experience through AI. Ocula Boost, its SaaS platform, produces significant revenue uplifts and time savings for major commerce sites globally.

**ocula.tech**

## PulseAI

PulseAI is a medtech company that builds AI-enabled software products designed to improve the accuracy, efficiency and scalability of cardiac diagnostics. Developed on a growing proprietary database of more than 1 million patients, PulseAI has created a cloud-based digital platform allowing for easy device integration and scalable deployment of deep learning AI-ECG algorithms.

**pulseai.io**

## PwC

PwC is a multinational professional services network that offers accounting, auditing, consulting and other services to a broad range of clients. PwC in Northern Ireland is PwC UK's fastest-growing region and its largest regional office outside London.

In June 2021, PwC announced a £40m Advanced Research and Engineering Centre, creating up to 800 jobs in Northern Ireland. Delivered in partnership with AI researchers from both Ulster and Queen's University, the centre is driving future innovations in technology, enhancing PwC's reputation as a world-leader in technology innovation, as well as its capabilities in research areas such as robotic process automation (RPA), workflow automation, data analytics and AI.

**[pwc.co.uk/who-we-are/office-locations/belfast.html](https://pwc.co.uk/who-we-are/office-locations/belfast.html)**

## Pytilia

Pytilia helps organisations futureproof their business. With an established track record in delivering software solutions and a range of international clients including some of the biggest names in IT, Pytilia has a particular focus on:

- Financial Services concentrating on RegTech/ Compliance and WealthTech.
- Infrastructure including Cyber and Data Pipelines.
- Health and life sciences.

Innovation is core to its DNA. It has a strong R&D pedigree with an AI focus and a track record of successful collaborative research with academic partners that it applies to solve real business problems.

**pytilia.io**

## Rapid7

Rapid7 is a global cyber security company - founded in 2000 and headquartered in Boston, Massachusetts. Their portfolio of best-in-class cyber security solutions empowers companies to manage risk and eliminate threats across the entire threat landscape - from apps to the cloud to traditional infrastructure to the dark web.

The Belfast site opened in 2014 and is now the largest for the company worldwide, with staff from all disciplines and product development areas.

**rapid7.com**

## Sonrai Analytics

Sonrai Analytics is a global innovator in AI-driven precision medicine. Through AI Cloud Data Analytics, Sonrai automates laborious data processes, harnesses AI, and speeds up new drug and healthcare developments from marker analysis and drug trials to digital pathology imaging or training AI algorithms. In June 2022, Sonrai announced a £2.175m 'Seed Plus' funding round to accelerate international growth.

**sonraianalytics.com**

## STATSports

STATSports is the global leader in GPS sports performance analysis, combining award-winning AI-powered technology with revolutionary sports science. STATSports' product suite is designed by coaches for coaches, empowering teams and athletes to excel on the field. AI-integrated hardware and software provide real-time data at the training ground and pitch-side on matchday, so practitioners can maximise performance levels, while reducing risk of injury.

STATSports' technology is used by teams such as Manchester United, Liverpool, Arsenal, Manchester City, PSG, Juventus, England FA, Irish Rugby, the All Blacks, Washington Commanders, LA Dodgers, and many more.

**statsports.com**





**Find out more**

For more details on Northern Ireland's pioneering AI and Data analytics capabilities, please visit [investni.com/technology](https://investni.com/technology)

